

# HOPE FOR ETHIOPIA E.V. FOUNDED IN JENA, GERMANY WORKING IN LALIBELA, ETHIOPIA

HOPE FOR ETHIOPIA E.V. WAS FOUNDED IN 2014 AND IS RECOGNIZED BY THE JENA TAX OFFICE AS A NON-PROFIT ORGANIZATION ACCORDING TO AO §52 PARAGRAPH 2.

THE ORGANIZATIONS PRIORITY CONCERN IS LIVING HUMANITY BY TAKING DIRECT ACTION AGAINST POVERTY AND MISERY INSTEAD OF BEING A BYSTANDER OF THE WORLD'S SUFFERING. NOBODY CAN HELP EVERYBODY, BUT EVERYBODY CAN HELP SOMEBODY!

ALREADY, WE HAVE GATHERED SEVERAL HUNDRED PERMANENT SUPPORTERS AND WITH EVERY PUBLIC APPEARANCE, WE RECEIVED POSITIVE FEEDBACK FOR OUR TRANSPARENT AND DEDICATED WORK, WHICH IS CHARACTERIZED BY COMPASSION AND CHARITY.

HOPE FOR ETHIOPIA COMMITTED ITSELF TO THE "TRANSPARENT CIVIL SOCIETY INITIATIVE" AND WAS ADDED TO THE LIST OF SUBSCRIBERS.



IN 2019 WE FOUNDED OUR ETHIOPIAN PARTNER ORGANIZATION "TESFA LE ETHIOPIA" AND IN LALIBELA WE COOPERATE CONSTRUCTIVELY WITH THE ADMINISTRATION AND THE AUTHORITIES.



## HOPE-FOR-ETHIOPIA.COM

HOPE, LOVE AND COMPASSION FOR THE POOR AND NEEDY

## Hope



for Ethiopia e.V.



NEW JERUSALEM

# SPONSORSHIPS @HOPE FOR ETHIOPIA E.V.

**A SPONSORSHIP OF 30 TO 50 EUROS A MONTH PROVIDES SHELTER AND FOOD**

**"HOPE FOR ETHIOPIA E.V." WAS BORN FROM THE IDEA OF SUPPORTING NEEDY PEOPLE, OLD PEOPLE, ORPHANS, STREET CHILDREN, DISABLED PEOPLE AND THE POOREST OF THE POOR THROUGH DIRECT PERSONAL SPONSORSHIPS.**

**MONTHLY DONATIONS FROM THE SPONSORS ARE USED FOR BASIC NEEDS SUCH AS SHELTER, FOOD AND MEDICINE AND ENABLE THE SPONSORSHIPS A LIFE UNDER DECENT CIRCUMSTANCES.**

**IN THE MEANTIME, WE HAVE BEEN ABLE TO MEDIATE 105 SPONSORSHIPS WITH OVER 340 NEEDY PEOPLE FROM LALIBELA. ALL OF THEM WERE HOMELESS BEFORE. NOW THEY BENEFIT FROM ACCOMMODATION, SUFFICIENT NUTRITION AND BASIC EDUCATION FOR THE CHILDREN.**



**NOBODY CAN HELP EVERYBODY BUT EVERYBODY CAN HELP SOMEBODY**



**HOPE-FOR-ETHIOPIA.COM**

**HOPE, LOVE AND COMPASSION FOR THE POOR AND NEEDY**

**Hope**



**for Ethiopia e.V.**



**NEW JERUSALEM**

# SCHOLARSHIPS @HOPE FOR ETHIOPIA E.V.

**WITH SCHOLARSHIPS, WE ENSURE SCHOOL ATTENDANCE FOR CHILDREN FROM POOR MOUNTAIN FARMING FAMILIES WHO WOULD NOT BE ABLE TO ATTEND SCHOOL.**

**THE KOYITA SCHOOL IS LOCATED AT 3,000 METERS ABOVE SEA LEVEL IN THE MOUNTAINS AROUND LALIBELA AND TEACHES GRADES 1 TO 4.**



**THE FARMING FAMILIES IN THE MOUNTAINS ARE POOR, HAVE 4 TO 7 CHILDREN AND MANY, ESPECIALLY THE GIRLS, ARE NOT ENABLED TO GO TO SCHOOL.**



**SO FAR, WE ARRANGED 32 SCHOLARSHIPS, THE PARENTS RECEIVE 10 EUROS A MONTH IN BANK ACCOUNTS TO SEND THEIR CHILDREN TO SCHOOL INSTEAD OF LETTING THEM HELP IN THE FIELDS OR WITH THE ANIMALS.**

**SINCE THE BEGINNING OF OUR SCHOLARSHIPS, THE NUMBER OF STUDENTS AT KOYITA SCHOOL HAS ALMOST DOUBLED, AS MANY PARENTS, WHO DID NOT CARE ABOUT THEIR CHILDREN'S SCHOOLING, ARE NOW HOPING FOR A SCHOLARSHIP.**

**KNOWLEDGE IS POWER, EDUCATION IS THE KEY**



**HOPE-FOR-ETHIOPIA.COM**

**HOPE, LOVE AND COMPASSION FOR THE POOR AND NEEDY**

**Hope**



**for Ethiopia e.V.**



**NEW JERUSALEM**

# SUPPORT FOR KOYITA & ASHETEN SCHOOL

SINCE 2015 WE HAVE BEEN SUPPORTING 2 FORGOTTEN SCHOOLS IN THE MOUNTAINS OF LALIBELA. THE SCHOOLS LACK EVERYTHING AND APART FROM US, THERE IS NO SUPPORT SINCE THE ADMINISTRATION CANNOT AFFORD TO HELP EITHER.

WITH TEXTBOOKS, TEACHING MATERIALS, SCHOOL BENCHES AND SOLAR ENERGY SYSTEMS, WE HAVE SIGNIFICANTLY IMPROVED THE LEARNING CONDITIONS AND THANKS TO OUR WATER CONNECTION, THE EDUCATION WAS EXPANDED TO GRADES 7/8 IN THE ASHETEN SCHOOL SINCE 2017.



THROUGH OUR "BOOKS FOR LALIBELA" PROJECT, WE WERE ABLE TO OPEN LIBRARIES IN THE SCHOOLS, WHICH WE ARE CONTINUOUSLY EXPANDING TOGETHER WITH OUR PARTNER "ART OF BUNA E.V.".



A STRONG NATION AND A FREE NATION CAN ONLY BASE ITSELF UPON EDUCATION. HAILE SELASSIE



**HOPE-FOR-ETHIOPIA.COM**

HOPE, LOVE AND COMPASSION FOR THE POOR AND NEEDY

Hope



for Ethiopia e.V.



NEW JERUSALEM

# CHARITY KITCHEN LET THE HUNGRY BE FED!

**COVID-19, LACK OF TOURISTS, THE WAR IN ETHIOPIA, THE OCCUPATION OF LALIBELA AND GLOBAL INFLATION HAVE DOUBLED OR TRIPLED FOOD PRICES IN LALIBELA AND PEOPLE ARE STARVING. HELP IS URGENTLY NEEDED.**

**TOGETHER WITH THE ADMINISTRATION OF LALIBELA WE MADE A LIST OF THE 100 "MOST IN NEED" AND IN AUGUST 2022 WE STARTED COOKING AND SERVING MEALS TO HUNGRY PEOPLE TWICE A WEEK AT OUR CHARITY CENTER CONSTRUCTION SITE.**

**OUR DISTRIBUTION OF MEALS IN TIMES OF FOOD SHORT-AGE IS RECOGNIZED AND APPRECIATED THROUGHOUT LALIBELA, ADMINISTRATION OFFICIALS VOLUNTEER TO SERVE THE PEOPLE AND THE MAYORESS VISITED OUR CHARITY KITCHEN AND EXPRESSED HER GREAT THANKS.**

**UNFORTUNATELY, WE CANNOT MAINTAIN OUR FOOD DISTRIBUTION PERMANENTLY AND AT THE END OF THE YEAR WE WILL CLOSE OUR KITCHEN AFTER 5 MONTHS AND OVER 5,000 MEALS. MANY OF THE PEOPLE WILL MISS OUR CHARITY KITCHEN AND WILL PROBABLY STAY HUNGRY AGAIN MORE OFTEN.**



**HOPE-FOR-ETHIOPIA.COM**

**HOPE, LOVE AND COMPASSION FOR THE POOR AND NEEDY**

**Hope**



**for Ethiopia e.V.**



**NEW JERUSALEM**

# COMMUNITY SUPPORT PROJECTS @HOPE

**WE ARE COMMITTED TO THE LALIBELA COMMUNITY IN MANY WAYS AND WORK VERY CLOSELY AND CONSTRUCTIVELY WITH THE CITY ADMINISTRATION.**



**SINCE 2019 WE HAVE BEEN SUPPORTING A CHILDREN'S CIRCUS WITH TRAINING EQUIPMENT, HAVE PURCHASED A GENERATOR FOR PERFORMANCES AND ENABLE PARTICIPATION IN COMPETITIONS AND SHOWS.**



**WE FINANCE MEDICAL TREATMENTS AND SURGERY FOR SERIOUSLY ILL CHILDREN WHO WOULD OTHERWISE BE DENIED TREATMENT. THE NEED IS HUGE, BUT WE CANNOT REMAIN INACTIVE WHEN THERE IS A CHANCE TO SAVE A CHILD'S LIFE.**



**DURING THE WAR IN ETHIOPIA WE TOOK CARE OF REFUGEES, DISTRIBUTED SEVERAL TONS OF TEFF FLOUR, ENABLED MEDICAL CARE AND SUPPORTED THE ADMINISTRATION WITH MONEY FOR A GENERATOR.**



**AT CHRISTMAS WE HOST AND FEED 150 PILGRIMS IN OUR CHARITY CENTER. DAILY MEAL, LODGING, SHOWERS AND TOILETS THROUGHOUT THE 4-DAY CHRISTMAS CELEBRATIONS IN THE HOLY TOWN OF LALIBELA WILL BE PROVIDED.**



**HOPE-FOR-ETHIOPIA.COM**

**HOPE, LOVE AND COMPASSION FOR THE POOR AND NEEDY**

**Hope**

**for Ethiopia e.V.**



NEW JERUSALEM

# HOPE FOR ETHIOPIA E.V.



JOHANNA & LEON JOUBERT, FERDI REUL, ANDI HEIGL, SIGRID STAUDINGER AND KEVIN DÖLLE (LEFT TO RIGHT)

OUR YOUTUBE VIDEO CHANNEL DOCUMENTS OUR PROJECTS AND GOOD DEEDS AND SHOWS HOW IMPORTANT AND SUSTAINABLE OUR WORK IS.



[WWW.YOUTUBE.COM/C/HOPEFORETHIOPIA](http://WWW.YOUTUBE.COM/C/HOPEFORETHIOPIA)



[WWW.FACEBOOK.COM/HOPE4ETHIOPIA](http://WWW.FACEBOOK.COM/HOPE4ETHIOPIA)



[WWW.INSTAGRAM.COM/HOPE.FOR.ETHIOPIA](http://WWW.INSTAGRAM.COM/HOPE.FOR.ETHIOPIA)

CHAIRMAN FERDINAND REUL  
[FERDI@HOPE-FOR-ETHIOPIA.COM](mailto:FERDI@HOPE-FOR-ETHIOPIA.COM)  
ASSOCIATION REGISTER No 231593  
REGISTERED IN JENA, GERMANY

ADMINISTRATION IN LALIBELA  
GEZA KASSA SISAY  
[GEZAKASSA@GMAIL.COM](mailto:GEZAKASSA@GMAIL.COM)  
LALIBELA, ETHIOPIA



GERMAN DONATION ACCOUNT  
HOPE FOR ETHIOPIA E.V.  
IBAN DE51793301110002340476  
BIC: FLESDEMXXX - FLESSABANK

PAYPAL DONATION TO  
[HOPE-FOR-ETHIOPIA@GMX.DE](mailto:HOPE-FOR-ETHIOPIA@GMX.DE)



**HOPE-FOR-ETHIOPIA.COM**

HOPE, LOVE AND COMPASSION FOR THE POOR AND NEEDY

Hope



for Ethiopia e.V.



NEW JERUSALEM

DEC 2022

# ORPHANAGE & CHARITY CENTER

**OUR VISION IS TO OPEN AN ORPHANAGE AND CHARITY CENTER IN LALIBELA.**

**A HOME AND A FAMILY FOR ORPHANS, HELP FOR PEOPLE IN NEED, SHELTER FOR THE HOMELESS, FOOD FOR THE HUNGRY, WITH A WIDE RANGE OF EDUCATIONAL OFFERS FOR ALL AGES, LEISURE ACTIVITIES, CHRISTIAN & SOCIAL CARE AND SUPPORTIVE MEDICAL AID.**



**IN 2019 WE RECEIVED AN 800M<sup>2</sup> PLOT OF LAND FROM THE LALIBELA ADMINISTRATION AND IN JANUARY 2020 WE STARTED WITH OUR CONSTRUCTION WORK. TODAY 314M<sup>2</sup> OF FOUNDATION AND BUILDING PILLARS ON BOTH FLOORS HAVE BEEN COMPLETED.**



**THE FOLLOWING PAGES FURTHER DESCRIBE THE PROJECT AND ITS FUNDING CONCEPT.**



**HOPE-FOR-ETHIOPIA.COM**

**HOPE, LOVE AND COMPASSION FOR THE POOR AND NEEDY**

**Hope**

**for Ethiopia e.V.**



**NEW JERUSALEM**



# THE STORY BEHIND

**FERDINAND REUL**  
**FOUNDER AND CHAIRMAN**

**WHEN I VISITED LALIBELA FOR THE FIRST TIME IN 2013 TO SEE THE MONOLITHIC ROCK CHURCHES, WHICH ARE PART OF THE UNESCO WORLD HERITAGE, I NOTICED THE OMNIPRESENT POVERTY AND THE INHUMANE CONDITIONS UNDER WHICH MANY LOCALS MUST SUFFER FROM LIVE. PEOPLE STARVE AND BEG ON THE STREETS TO SURVIVE. THOSE WHO ARE UNABLE TO TAKE CARE OF THEMSELVES AND HAVE NO FAMILY, ARE HOMELESS, BEGGING. ESPECIALLY FOR THE OLD AND DISABLED, ORPHANS AND SINGLE MOTHERS WITH YOUNG CHILDREN, LIFE IS NEARLY IMPOSSIBLE.**

**A YEAR LATER, ON MY SECOND TRIP TO LALIBELA, I WAS BAPTIZED IN ONE OF THOSE MONOLITHIC CHURCHES ACCORDING TO THE ETHIOPIAN ORTHODOX TRADITION AND GIVEN THE NAME FIKIRE MARYAM (THE LOVE OF MARY). FILLED WITH GRATITUDE AND COMPASSION, I MADE THE DECISION TO HELP THE POOREST OF THE POOR INSTEAD OF IDLY WATCHING THEIR SUFFERING. THE PRIVILEGE OF BEING BORN IN GERMANY GAVE ME THE OPPORTUNITY TO MAKE A DIFFERENCE. SO, I FELT OBLIGED TO TAKE ON RESPONSIBILITY AND HELP THESE PEOPLE IN NEED.**

**THE AID ORGANIZATION I THEN FOUNDED IN 2014 HAS DEVELOPED VERY WELL IN THE FOLLOWING YEARS, WE HAVE ACHIEVED MUCH MORE THAN I WOULD HAVE EVER THOUGHT AND SINCE THE DAYS OF MY BAPTISM THERE HAS BEEN A VISION OF A CHARITY CENTER IN LALIBELA. A CENTER OF CHARITY FOR THE POOREST OF THE POOR AND FOR THE BENEFIT OF THE LALIBELA COMMUNITY. THIS VISION MANIFESTED ITSELF OVER THE YEARS AND THE IDEAS AND POSSIBILITIES OF A CHARITY CENTER BECAME CONCRETE.**

**IN LALIBELA THERE ARE NO SOCIAL SYSTEM, NO COMMUNITY INFRASTRUCTURE, AND NO EDUCATIONAL OFFERS BESIDES BASIC SCHOOL. NEEDS, THAT MUST BE MET IN ORDER TO SUPPORT GROWTH AND WEALTH FROM WITHIN THE SOCIETY.**

**FROM VISION TO PLAN OF ACTION**



**HOPE-FOR-ETHIOPIA.COM**

**HOPE, LOVE AND COMPASSION FOR THE POOR AND NEEDY**

**Hope**



**for Ethiopia e.V.**



**NEW JERUSALEM**

# ORPHANAGE @CHARITY CENTER

**ACCORDING TO UNAIDS, ETHIOPIA HAS THE HIGHEST PERCENTAGE OF AIDS ORPHANS IN SUB-SAHARAN AFRICA WITH AROUND 886,820 CHILDREN. IN LALIBELA, TOO, THERE ARE COUNTLESS ORPHANS BECAUSE OF AIDS, OTHER ILLNESSES OR BECAUSE THEIR MOTHER DIED DURING CHILD-BIRTH. THE ORPHANS OFTEN LIVE WITH RELATIVES, BUT SOMETIMES THERE IS NO ONE TO TAKE CARE OF THE CHILDREN. THERE IS NO ORPHANAGE, ALTHOUGH URGENTLY NEEDED TO ENSURE A FUTURE FOR THE UPCOMING GENERATION.**

**WE WANT TO GIVE UP TO 10 ORPHANS A HOME IN OUR CHARITY CENTER. LOVE, CARE, GOOD NUTRITION, SCHOOL ATTENDANCE, AND A CAREFREE CHILDHOOD. SO THAT THEY ARE PREPARED FOR AN INDEPENDENT, SELF-DETERMINED LIFE AND HAVE ALL MEANS FOR A SUCCESSFUL FUTURE.**

**THE MAYOR AND THE ADMINISTRATION OF LALIBELA WELCOME AND APPRECIATE OUR PLAN TO OPEN AN ORPHANAGE AND THE OFFICE FOR WOMEN, CHILDREN AND SOCIAL AFFAIRS WILL SUPPORT AND ACCOMPANY US IN THE MEDIATION AND SELECTION OF THOSE MOST IN NEED.**

**8 ROOMS ARE PLANNED FOR ORPHANS, LOCALS TO LIVE WITH THE ORPHANS IN THE CHARITY CENTER WILL BE CAREFULLY CHOSEN. THIS PROVIDES THEM WITH A CLEAN, HYGIENIC ENVIRONMENT EXCEEDING ETHIOPIAN STANDARDS. THE CAREGIVERS WILL COOK DAILY FOR AND WITH THE ORPHANS AND THEREBY ENSURE SUPPLY OF ENOUGH HEALTHY AND BALANCED FOOD.**

**FURTHER, WE PLACE GREAT IMPORTANCE ON THEIR EDUCATION AND AFTER SCHOOL WE PLAN TO ADD LESSONS, HELD WITHIN THE CHARITY CENTER, PUTTING A SPECIAL FOCUS ON ENGLISH. WE WILL TAKE CARE OF MEDICAL CHECKUPS AND NECESSARY TREATMENTS AND SUPPORT THE INTEGRATION OF THE ORPHANS INTO THEIR RELIGION, CULTURE AND COMMUNITY.**



**HOPE-FOR-ETHIOPIA.COM**

**HOPE, LOVE AND COMPASSION FOR THE POOR AND NEEDY**

**Hope**

**for Ethiopia e.V.**



**NEW JERUSALEM**

# ORPHANAGE @CHARITY CENTER

**THE MEDIATION OF THE ORPHANS IN FOSTER FAMILIES WOULD BE DESIRABLE, BUT WE ARE AWARE OF THE RESPONSIBILITY FOR THE CHILDREN. THE PLACEMENT IN FOSTER FAMILIES REQUIRES AN EMOTIONAL INTEGRATION AND REGULAR MONITORING OF THE CHILD'S WELL-BEING. THUS, WE BELIEVE THIS TO BE A SENSIBLE AND INDIVIDUAL DECISION ON A CASE-BY-CASE BASIS.**

**TO FINANCE THE COSTS, WE WILL ARRANGE SPONSORSHIPS FOR THE INDIVIDUAL ORPHANS, SO THAT KIND-HEARTED PEOPLE FROM THE RICHER REGIONS OF THE WORLD WILL FINANCE THE LIFE OF THE CHILDREN IN OUR ORPHANAGE WITH MONTHLY DONATIONS. THE COSTS PER PLACE IN OUR ORPHANAGE ARE DIFFICULT TO CALCULATE EXACTLY AT THIS POINT IN TIME BUT ARE ESTIMATED TO BE AROUND 120 TO 150 EUROS PER MONTH.**

**OF COURSE, IT WOULD BE GREAT IF WE COULD FIND COMPANIES OR INDIVIDUALS WHO WOULD SPONSOR OUR ORPHANAGE AND PROVIDE FUNDING FOR ITS CONTINUED WORK. IN 2021 LINDA AND PETER FROM THE USA HAVE GENEROUSLY SUPPORTED OUR CONSTRUCTION IN LALIBELA WITH A FOCUS ON THE PLANNED ORPHANAGE AND WE HOPE FOR MORE SUPPORTERS.**

**GIVING YOUNG PEOPLE THE OPPORTUNITY TO GROW UP IN A HEALTHY ENVIRONMENT ALLOWS THEM TO DEVELOP INTO CONTRIBUTING MEMBERS OF SOCIETY. OPENING UP A PERSPECTIVE FOR THE FUTURE OF THOSE CHILDREN MIGHT MULTIPLY THE CHANGES WE TRY TO BRING TO THE WORLD. WE ALREADY HAVE DOZENS OF ORPHANS AMONG OUR SPONSORSHIPS AND ARE HAPPY TO WITNESS THE DIFFERENCE, THAT **LOVE, CAREGIVING AND EDUCATION** MAKE. IF WE WANT TO WORK SUSTAINABLY, WE ESPECIALLY MUST TAKE CARE OF THE CHILDREN.**

**THE ORPHANAGE IS A CENTRAL PART OF OUR UNDERTAKING AND WE WILL ALWAYS PUT THE WELFARE AND PROTECTION OF THE YOUNG AND DEFENCELESS FIRST.**



## WELFARE AND PROTECTION



**HOPE-FOR-ETHIOPIA.COM**

**HOPE, LOVE AND COMPASSION FOR THE POOR AND NEEDY**

**Hope**

**for Ethiopia e.V.**



**NEW JERUSALEM**

# FOOD, SHELTER & COMPASSION



SHELTER

HOMELESS PEOPLE ARE OMNIPRESENT IN LALIBELA. FOR THE MOST VULNERABLE, ORPHANS, OLD AND DISABLED PEOPLE, WE ARE ASKING KIND-HEARTED PEOPLE TO START A SPONSORSHIP AND PROVIDE SHELTER AND FOOD WITH THEIR MONTHLY SUPPORT. UNFORTUNATELY, WE CANNOT HELP EVERYONE IMMEDIATELY AND SOME PEOPLE IN NEED LIVE ON THE STREET FOR MONTHS UNTIL A SPONSORSHIP IS FOUND. FOR THESE PEOPLE, THE CHARITY CENTER WILL PROVIDE **TEMPORARY SHELTER**.



FOOD

STARVATION IS A CONSTANT CONDITION FOR MANY PEOPLE IN LALIBELA. FOR US, GIVING A **FREE MEAL** TO THOSE IN NEED IS A CONCERN OF COMPASSION AND HUMANITY. WE ARE ALWAYS LOOKING FOR SPONSORS WHO WILL FINANCE A FOOD DISTRIBUTION. IN OUR CHARITY CENTER, WE PLAN TO COOK FOR THE ORPHANS EVERY DAY AND, DEPENDING ON THE INCOMING DONATIONS, WE WILL PREPARE FURTHER MEALS AND DISTRIBUTE THEM TO THE NEEDY, PRIMARILY STARVING CHILDREN.



HELP FOR  
THOSE IN NEED

HUMANITARIAN VALUES ARE OUR MOTIVATION, WE WANT TO LIVE CHARITY AND THE SUFFERING OF OTHERS MOVES US. FOR PEOPLE IN THE MOST DIFFICULT LIFE SITUATIONS, IT IS IMPORTANT NOT TO LOSE HOPE, TO FEEL UNDERSTOOD AND SOCIALLY INVOLVED. MANY OF THE POOREST LIVE IN EXCLUSION, WITHOUT SOCIAL CONTACTS AND PLAGUED BY SHAME. OUR CHARITY CENTER WILL BE A **PLACE OF CONTACT** FOR DESPERATE PEOPLE AT ANY TIME. WE ALWAYS WANT TO HAVE AN OPEN EAR FOR EVERYONE AND TRY TO FIND SOLUTIONS TO PEOPLE'S INDIVIDUAL PROBLEMS. OFTEN, IT'S JUST SMALL THINGS THAT ARE OF EXISTENTIAL IMPORTANCE. FOR EXAMPLE, 10 EUROS FOR THE WAY TO THE HOSPITAL 300KM AWAY. IN THOSE CASES, WE CONSIDER HELP AND SUPPORT AS OUR **SOCIAL RESPONSIBILITY**.



**HOPE-FOR-ETHIOPIA.COM**

HOPE, LOVE AND COMPASSION FOR THE POOR AND NEEDY

Hope



for Ethiopia e.V.



NEW JERUSALEM

# EDUCATION @CHARITY CENTER



**OVER 40% OF THE ETHIOPIAN POPULATION IS UNDER THE AGE OF 14, AND ALTHOUGH SCHOOLING IS COMPULSORY, THE EDUCATION SYSTEM IS FAR FROM ABLE TO OFFER QUALIFIED TEACHING. IN LALIBELA, THERE ARE VERY FEW EXTRACURRICULAR EDUCATIONAL OPPORTUNITIES AND THERE ARE NO FREE OPPORTUNITIES FOR ADULT EDUCATION. WE DO NOT WANT TO AND CANNOT REPLACE A SCHOOL, BUT WE HAVE VARIOUS IDEAS FOR EDUCATIONAL OFFERS IN OUR CHARITY CENTER.**

**PRE-SCHOOL EDUCATION FROM AGE 5 – FOR EXAMPLE AMHARIC/ENGLISH ALPHABET TUTORING COURSES FOR STUDENTS OF ALL GRADES TO SUPPORT TEACHING HOMEWORK SUPPORT AND EXAM PREPARATION**

**FOREIGN LANGUAGE COURSES FOR BEGINNERS AND ADVANCED LEARNERS**

**WRITING AND READING COURSES FOR ILLITERATE PEOPLE OF ALL AGES**

**SHARING EXPERIENCES AND KNOWLEDGE ABOUT SUSTAINABLE AGRICULTURE AND BREEDING LECTURES AND COURSES ON FIRST AID, HYGIENE, HIV EDUCATION AND FAMILY PLANNING**

**WE WILL FIND TEACHERS AND SUITABLE LECTURERS FOR THE INDIVIDUAL EDUCATIONAL OFFERS IN LALIBELA AND EMPLOY INTERNATIONAL STUDENTS AS VOLUNTEERS. THE EDUCATIONAL OFFERINGS IN OUR CHARITY CENTER CAN BE FURTHER EXPANDED AT ANY TIME ACCORDING TO DEMAND AND EXPERIENCE, AND WE WILL ALSO OFFER SUBJECT-SPECIFIC COURSES, SUCH AS IT COURSES, FOR EVERYONE.**



**HOPE-FOR-ETHIOPIA.COM**

**HOPE, LOVE AND COMPASSION FOR THE POOR AND NEEDY**

**Hope**

**for Ethiopia e.V.**



**NEW JERUSALEM**

# CHARITY CENTER MISSIONS



SCHOOL BOOKS

THERE IS A SHORTAGE OF **SCHOOL BOOKS** IN LALIBELA AND ONLY VERY FEW STORES OFFER INDIVIDUAL COPIES AT PRICES THAT ARE 3 TO 5 TIMES INFLATED. WE WILL BUY SCHOOL BOOKS FOR GRADES 4 TO 10 IN BAHIR DAR AND ADDIS ABABA AND OFFER AND SELL THEM IN LALIBELA AT WHOLESALE PRICE. FOR FAMILIES IN NEED, WE WILL SUBSIDIZE THE SCHOOL BOOKS OR, IF NECESSARY, GIVE THEM FOR FREE.



PUBLIC LIBRARY

WITH OUR "BOOKS FOR LALIBELA" PROJECT, WE HAVE ALREADY OPENED SMALL LIBRARIES IN 2 MOUNTAIN SCHOOLS TOGETHER WITH THE "ART OF BUNA" ASSOCIATION FROM COLOGNE AND WE ALSO WANT TO ESTABLISH **A PUBLIC LIBRARY** IN OUR CHARITY CENTER. BOOKS IN AMHARIC AND ENGLISH, FREELY ACCESSIBLE TO EVERYONE AND ADAPTED TO THE NEEDS AND DESIRES OF THE PEOPLE. OUR LIBRARY WILL ALSO OFFER A PLACE FOR READINGS AND READING CIRCLES.



SELF-HELP GROUPS

WE WANT TO SUPPORT THE FORMATION AND FURTHER DEVELOPMENT OF **SELF-HELP GROUPS** AND WITH OUR CHARITY CENTER WE OFFER A PLACE FOR REGULAR MEETINGS AND EVENTS. THIS SUPPORTS CONNECTION AND INTEGRATION OF PEOPLE WHO ARE AFFECTED BY THE SAME ILLNESS OR DISABILITY, HAVE THE SAME "PROBLEM" OR ARE A MINORITY OR A DISCRIMINATED GROUP. WOMEN'S GROUPS AND PREGNANCY GROUPS ARE ALSO CONSIDERED AND RECEIVE SPECIAL SUPPORT FROM OUR CHARITY CENTER.



COMMUNITY PROJECTS

IT IS OUR CONCERN THAT THE LALIBELA COMMUNITY ORGANIZES ITSELF AND CARRIES OUT PROJECTS TO IMPROVE LIVING CONDITIONS, THE ENVIRONMENT OR THE CONDITION OF THE CITY. WE WILL START PROJECTS FOR REFORESTATION, NEIGHBOURHOOD CLEAN-UP AND ORGANIC COMMUNITY FARMING AND THERE ARE ALREADY MANY IDEAS FOR FURTHER PROJECTS TOGETHER WITH THE PEOPLE OF LALIBELA.



**HOPE-FOR-ETHIOPIA.COM**

HOPE, LOVE AND COMPASSION FOR THE POOR AND NEEDY

Hope



for Ethiopia e.V.



NEW JERUSALEM

# CHARITY CENTER MISSIONS



WE SEE OUR CHARITY CENTER AS A LIVELY MEETING PLACE WHERE PEOPLE MEET AND SOCIAL CONTACTS ARE MAINTAINED. TO TALK OVER A TRADITIONAL ETHIOPIAN COFFEE CEREMONIES OR PLAY COMMUNITY GAMES. THE CHARITY CENTER SHOULD ALSO OFFER OPPORTUNITIES FOR SOCIAL CONTACT FOR THE NEIGHBOURHOOD.



WE WILL PROVIDE THE CHILDREN AND YOUNG PEOPLE WITH **LEISURE ACTIVITIES**, SET UP OPPORTUNITIES FOR TABLE TENNIS, ORGANIZE SINGING AND DANCING GROUPS AND SOMETIMES FOLLOW SPORTS EVENTS ON TELEVISION OR SHOW FILMS. WE WILL CELEBRATE HOLIDAYS IN OUR CHARITY CENTER TOGETHER WITH THE COMMUNITY. AT ANY CELEBRATION, WE WILL OBSERVE A STRICT BAN ON ALCOHOL IN OUR CHARITY CENTER AND ENSURE THE WELFARE OF OUR ORPHANS LIVING IN THE CHARITY CENTER.



ESPECIALLY FOR PEOPLE IN NEED AND SUFFERING, **FAITH AND HOPE** PLAY A MAJOR ROLE AND ARE OFTEN THE LAST THING THEY HAVE LEFT. WE HAVE LONGSTANDING, CLOSE CONTACTS WITH PRIESTS IN LALIBELA AND WE ARE ABLE TO PROVIDE SPIRITUAL SUPPORT FOR PEOPLE IN NEED OR DIFFICULT LIFE SITUATIONS. ON CHRISTIAN HOLIDAYS LIKE EASTER OR CHRISTMAS THERE WILL BE CELEBRATORY MEALS TOGETHER AND THE PEOPLE SHOULD RECEIVE THE BLESSING OF THE PRIESTS.



THE MEDICAL CARE WILL BE LIMITED TO **FIRST AID** AND THE DISTRIBUTION OF PAIN-KILLERS AND OTHER OVER-THE-COUNTER MEDICINES AS WELL AS BANDAGES. WE WILL OPEN A GLASSES-STATION WITH EQUIPMENT FOR REDUCED EYESIGHT AND TO HAND OUT GLASSES TO THOSE AFFECTED. WITH OUR **GLASSES-STATION**, WE CAN MAKE A FUNDAMENTAL CONTRIBUTION TO QUALITY OF LIFE IMPROVEMENT FOR MANY



**HOPE-FOR-ETHIOPIA.COM**

HOPE, LOVE AND COMPASSION FOR THE POOR AND NEEDY

Hope



for Ethiopia e.V.



NEW JERUSALEM

# OTHER ASSOCIATION BENEFITS



**HOPE FOR ETHIOPIA DOES NOT YET HAVE AN OFFICE IN LALIBELA AND PEOPLE KNOCK ON THE DOOR OF OUR EMPLOYEE GEZA SEVERAL TIMES A DAY HOPING FOR OUR HELP. IN OUR CHARITY CENTER THERE WILL BE AN OFFICE WHERE ADMINISTRATIVE TASKS WILL BE CARRIED OUT. SO PEOPLE SEEKING HELP, ADMINISTRATIVE REPRESENTATIVES OR BUSINESS PEOPLE KNOW WHERE TO TURN TO.**



**FOR VOLUNTEERS AND VISITORS FROM INTERNATIONAL SPONSORS, WE WILL SET UP 2 GUEST ROOMS FOR 2 PEOPLE EACH IN OUR CHARITY CENTER. WE OFFER OUR GUESTS THE OPPORTUNITY TO GAIN DIRECT INSIGHT INTO THE DAILY LIFE OF OUR ORPHANAGE AND CHARITY CENTER AND TO EXPERIENCE AUTHENTICALLY HOW NECESSARY AND HELPFUL OUR WORK IS. THERE ARE NO ACCOMMODATION COSTS FOR THE VOLUNTEERS DURING THE LONGER STAYS AND MEMBERS OF THE ASSOCIATION ALSO HAVE FREE ACCOMMODATION DURING THEIR WORK VISITS IN LALIBELA.**



**WHEN OUR CHARITY CENTER IS OPENED, WE WANT TO PUT OUT ADVERTISING MATERIAL IN THE HOTELS AND, THROUGH OUR CONTACTS WITH TOUR GUIDES, INVITE TOURISTS TO VISIT OUR CHARITY CENTER, INTRODUCE AND PRESENT OUR PROJECT AND THUS INCREASE OUR INTERNATIONAL AWARENESS AND EXPAND THE CIRCLE OF OUR SUPPORTERS.**

**OUR CHARITY CENTER IS ALWAYS MANNED AND GUARDED BY SECURITY GUARDS, THE ORPHANS AT OUR ORPHANAGE LIVE IN A SAFE AND SECURE ENVIRONMENT AND WE WILL CLOSELY CONTROL WHO HAS ACCESS TO THE CHARITY CENTER GROUNDS.**



**HOPE-FOR-ETHIOPIA.COM**

**HOPE, LOVE AND COMPASSION FOR THE POOR AND NEEDY**

**Hope**



**for Ethiopia e.V.**



**NEW JERUSALEM**



# 2019 - VISION BECOMES REALITY

**IN FEBRUARY 2019 WE HANDED OVER OUR CONCEPT TO THE MAYOR OF LALIBELA WITH A REQUEST FOR 1,000 M<sup>2</sup> OF BUILDING LAND FOR OUR ORPHANAGE AND CHARITY CENTER. AFTER CONSULTATION, A COMMISSION OF THE MANAGEMENT DECIDED UNANIMOUSLY TO MAKE AN 771M<sup>2</sup> PLOT OF LAND AVAILABLE TO US FOR FREE USE FOR 80 YEARS. AFTER 80 YEARS AND IF THE PURPOSE OF OUR CHARITY CENTER IS UNCHANGED, THE PERIOD OF USE WILL BE EXTENDED.**



**THE BUILDING LAND IS EASILY ACCESSIBLE, 50 METERS FROM THE MAIN ROAD IN A RESIDENTIAL AREA WHERE MAINLY FAMILIES WITH MANY CHILDREN LIVE IN SIMPLE DWELLINGS. MANY OF THE HUTS WERE BUILT BY THE ADMINISTRATION FOR FAMILIES FROM POORER BACKGROUNDS AND A LARGE PART OF OUR SPONSORSHIPS LIVE IN THE RESIDENTIAL AREA. THE ATTRACTIVE CHURCHES OF LALIBELA ARE 3 KM AWAY.**



**SO, OUR ORPHANAGE AND CHARITY CENTER HAS ITS PLACE DIRECTLY WITHIN THE CITY AND CAN ESTABLISH ITSELF AS A SOCIAL CENTER IN THE RESIDENTIAL AREA WITH AROUND 4,000 INHABITANTS.**

**THERE IS A CONNECTION TO ELECTRICITY AND WATER SUPPLY AND THE PROPERTY MEETS ALL REQUIREMENTS. THE VALUE OF THE LAND IS DIFFICULT TO MEASURE, ESTIMATED IT IS WORTH AROUND 100,000 EUROS AND IT WOULD BE IMPOSSIBLE FOR US TO BUY SUCH A LAND.**

**NOW OUR VISION BECAME REALITY, AND WE STARTED TO CREATE A CONSTRUCTION PLAN ACCORDING TO OUR IDEAS AND NEEDS.**



**HOPE-FOR-ETHIOPIA.COM**

**HOPE, LOVE AND COMPASSION FOR THE POOR AND NEEDY**

**Hope**

**for Ethiopia e.V.**



**NEW JERUSALEM**

# BUILDING PLAN & ROOM LAYOUT

**314M<sup>2</sup> FLOOR SPACE ON 2 FLOORS**

**8 ROOMS FOR ORPHANS**

**20 PEOPLE CLASS ROOM**

**60 PEOPLE MEETING AND DINING ROOM**

**20M<sup>2</sup> FREE LIBRARY**

**30M<sup>2</sup> OFFICE & STORE**

**45M<sup>2</sup> KITCHEN & STORE**

**2 ROOMS FOR STAFF**

**2 GUEST ROOMS**

**BATHROOMS**

**TERRACE**



**ORPHANAGE & CHARITY CENTER 1ST FLOOR**



**ORPHANAGE & CHARITY CENTER 2ND FLOOR**



**THE CENTER OF THE PLOT REMAINS UNDEVELOPED AND OFFERS SPACE TO SIT AROUND A TREE.**



**HOPE-FOR-ETHIOPIA.COM**

**HOPE, LOVE AND COMPASSION FOR THE POOR AND NEEDY**

**Hope**



**for Ethiopia e.V.**



**NEW JERUSALEM**

# 1st CONSTRUCTION PHASE

**IN JANUARY 2020 WE CLEARED THE BUILDING SITE OF RUBBISH AND LARGE STONES AND STARTED CONSTRUCTING OUR ORPHANAGE AND CHARITY CENTER. A LOT OF MATERIAL WAS NEEDED FOR THE FOUNDATION AND BUILDING PILLARS OF THE 1ST FLOOR AND WE USED 8 TONS OF STEEL, 40 TONS OF CEMENT, 72M<sup>3</sup> OF GRAVEL, 90M<sup>3</sup> OF SAND, 20 TRUCK STONES AND 30,000 LITERS OF WATER. AFTER ONLY 39 WORKING DAYS, 314M<sup>2</sup> OF FOUNDATION AND 34 BUILDING PILLARS WERE BUILT AND WE SUCCESSFULLY COMPLETED OUR FIRST CONSTRUCTION PHASE AT THE END OF MARCH 2020.**



**WITH OUR CONSTRUCTION WORK WE HAVE COME A BIG STEP CLOSER TO OUR GOAL IN A SHORT TIME.**



**SHORTLY AFTER THE COMPLETION OF THE FIRST CONSTRUCTION PHASE, THE GLOBAL COVID-19 PANDEMIC BEGAN AND OUR CONSTRUCTION WORK HAD TO STOP.**



**HOPE-FOR-ETHIOPIA.COM**

**HOPE, LOVE AND COMPASSION FOR THE POOR AND NEEDY**

**Hope**



**for Ethiopia e.V.**



**NEW JERUSALEM**

# 2nd CONSTRUCTION PHASE

THE PEAK OF COVID19 PASSED IN 2020 AND IN APRIL 2021 WE STARTED OUR SECOND CONSTRUCTION PHASE, ALSO THANKS TO THE GENEROUS DONATION FROM LINDA AND PETER SCHLESINGER.

AGAIN, WE USED 20 TONS OF CEMENT AND LARGE AMOUNTS OF REINFORCEMENT STEEL, BUT ABOVE ALL IT TOOK A LOT OF WOOD FOR THE FORMWORK. SOME DAYS WE HAD UP TO 100 WORKERS ON THE SITE. WE CARE ABOUT THE WELFARE OF THE WORKERS AND PUT A FOCUS ON EQUAL PAYMENT FOR WOMEN AND MEN.



IN JUNE 2021, THE WORK ON THE CORRIDORS AND BUILDING PILLARS ON THE 2ND FLOOR WAS FINISHED AND WE HAVE SUCCESSFULLY COMPLETED OUR 2ND CONSTRUCTION PHASE. THERE WERE NO INJURIES, OUR COST CALCULATIONS HAVE WORKED OUT DESPITE THE 15 TO 20 PERCENT INCREASE IN MATERIAL PRICES AND OUR BUILDING IS TAKING SHAPE.



AFTER THAT, THE WAR IN ETHIOPIA STARTED AND LALIBELA WAS OCCUPIED BY THE TIGRAY ARMY (TDF) FROM AUGUST TO DECEMBER 2021.



**HOPE-FOR-ETHIOPIA.COM**

HOPE, LOVE AND COMPASSION FOR THE POOR AND NEEDY

Hope



for Ethiopia e.V.

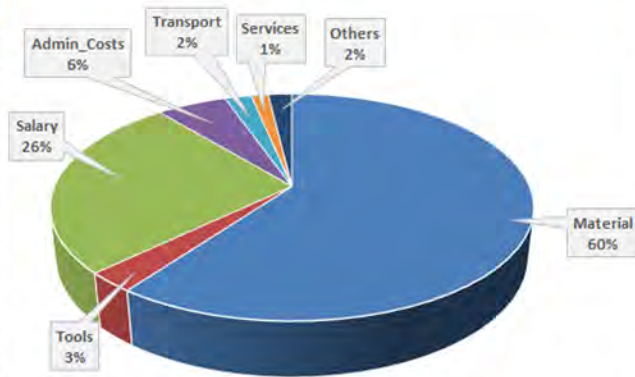


NEW JERUSALEM

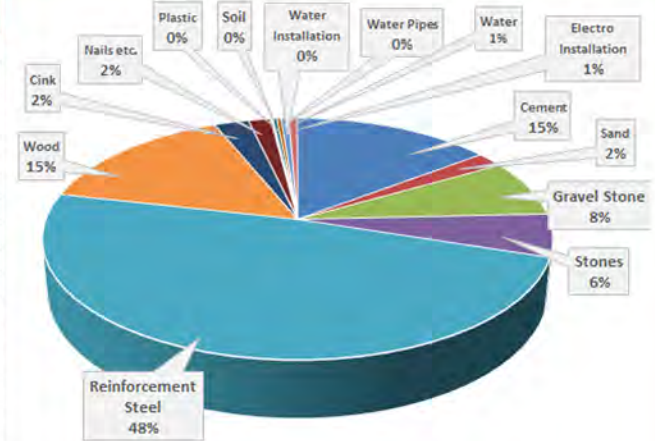
# CONSTRUCTION COSTS SO FAR

WITH THE COMPLETION OF THE SECOND CONSTRUCTION PHASE THE COSTS FOR ORGANIZATION AND CONSTRUCTION ADDED UP TO 88,407.88 EUROS. 60% ARE MATERIAL COSTS AND WE SPENT OVER 25,000 EUROS ON REINFORCING STEEL ALONE.

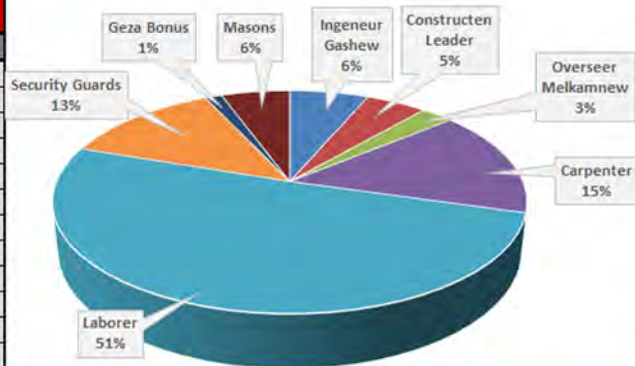
Category	Euro
<b>Category Costs</b>	<b>88.407,15 €</b>
Material	53.064,88 €
Tools	2.504,60 €
Salary	23.146,38 €
Admin_Costs	4.934,94 €
Transport	1.869,00 €
Services	1.210,18 €
Others	1.677,17 €



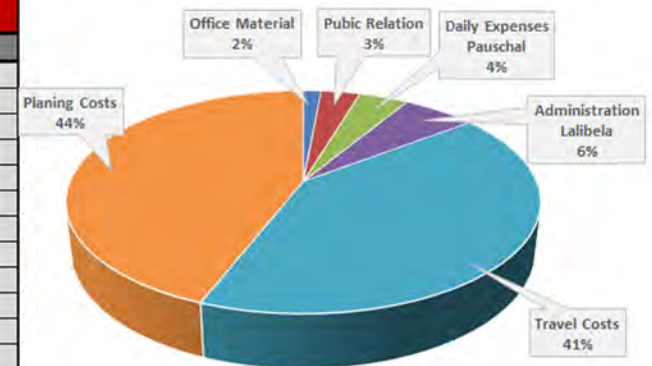
Material	Euro
<b>Material Costs</b>	<b>53.064,88 €</b>
Cement	7.793,48 €
Sand	1.060,46 €
Gravel Stone	4.025,14 €
Stones	3.034,38 €
Reinforcement Steel	25.757,06 €
Wood	8.116,43 €
Cink	1.347,07 €
Nails etc.	872,34 €
Water Pipes	50,00 €
Soil	37,50 €
Plastic	156,25 €
Water Installation	165,22 €
Electro Installation	301,74 €
Water	347,83 €



Salary	Euro
<b>Salary Costs</b>	<b>23.146,38 €</b>
Ingeneur Gashew	1.484,38 €
Constructen Leader	1.144,02 €
Overseer Melkamnew	606,39 €
Carpenter	3.590,87 €
Laborer	11.735,62 €
Security Guards	2.981,30 €
Geza Bonus	312,50 €
Masons	1.291,30 €



Admin_Costs	Euro
<b>Admin_Costs Cost</b>	<b>4.934,94 €</b>
Office Material	71,97 €
Pubic Relation	155,98 €
Daily Expenses Pauschal	198,43 €
Administration Lalibela	292,27 €
Travel Costs	2.041,00 €
Planing Costs	2.175,29 €



**HOPE-FOR-ETHIOPIA.COM**

HOPE, LOVE AND COMPASSION FOR THE POOR AND NEEDY

Hope



for Ethiopia e.V.



NEW JERUSALEM

# HOW CAN IT GO ON?

**DUE TO THE WAR IN ETHIOPIA AND THE OCCUPATION OF LALIBELA, CONSTRUCTION WORK WAS OUT OF THE QUESTION AND A TRIP TO LALIBELA WAS ONLY POSSIBLE AGAIN IN SEPTEMBER 2022.**

**WE ALREADY HAVE ADVANTAGES FROM OUR CHARITY CENTER CONSTRUCTION SITE. GARLIC GROWS ON THE SITE, WE USED THE AREA FOR DISTRIBUTIONS OF TEFF FLOUR IN TIMES OF WAR AND SINCE AUGUST 2022 WE HAVE BEEN HANDING OUT FOOD TWICE A WEEK IN OUR CHARITY KITCHEN FOR THE POOREST AND NEEDY.**



**FOR ETHIOPIAN CHRISTMAS IN JANUARY 2023 WE WILL ACCOMMODATE AND SERVE 150 ARRIVING PILGRIMS IN OUR CHARITY CENTER.**

## HOW CAN IT GO ON?

**THE NEXT STEPS ARE THE 2ND FLOOR HORIZONTAL BEAMS, THE CORRUGATED IRON ROOF AND MASONRY WORK FOR SETTING AND PLASTERING THE WALLS.**

**DUE TO THE WAR IN ETHIOPIA, BUILDING MATERIALS WERE SCARCE AND PRICES WERE IRRATIONAL. THE MARKET IS NOW STABILIZING AGAIN AND PRICES ARE NORMALIZING, BUT INFLATION IS EXPECTED TO MAKE PRICES RISE BY 15-20%. IT CANNOT BE CALCULATED EXACTLY, BUT ACCORDING TO OUR ENGINEER AND CONSTRUCTION MANAGER, WE HAVE TO RECKON WITH AROUND 50,000 EUROS TO COMPLETE THE BUILDING EXEMPT INTERIOR WORK. 10,000 EUROS FOR THE 2ND FLOOR TOP BEAMS, 15,000 EUROS FOR THE CORRUGATED IRON ROOF AND AROUND 25,000 EUROS FOR MASONRY WORK.**

**THE COSTS FOR THE INTERIOR DESIGN WITH SANITARY FACILITIES, KITCHEN, GUEST ROOMS AND TRAINING ROOM ARE UNKNOWN, BUT IT WILL CERTAINLY REQUIRE ANOTHER 50,000 EUROS.**



**HOPE-FOR-ETHIOPIA.COM**

**HOPE, LOVE AND COMPASSION FOR THE POOR AND NEEDY**

**Hope**



**for Ethiopia e.V.**



**NEW JERUSALEM**

# NOW WE NEED TO RAISE FUNDS

HOPE FOR ETHIOPIA CURRENTLY DOES NOT HAVE THE 50,000 EUROS TO COMPLETE THE BUILDING. DURING THE WAR IN ETHIOPIA, WE FOCUSED ON HUMANITARIAN AID FOR THE PEOPLE OF LALIBELA, RAISING 10,000 EUROS FOR THIS, BUT UNFORTUNATELY THE FUNDRAISING FOR OUR CONSTRUCTION WORK FELL SHORT. WE CURRENTLY HAVE 6,800 EUROS TO CONTINUE BUILDING AND HOPE TO BE ABLE TO BUILD THE TOP BEAMS OF THE 2ND FLOOR IN JANUARY 2023 AND THUS COMPLETE THE STEEL AND CONCRETE WORK. NOW WE WILL CONCENTRATE FULLY ON OUR ORPHANAGE AND CHARITY CENTER AGAIN, RAISE MONEY FOR FURTHER CONSTRUCTION IN MANY WAYS AND WE ARE CONFIDENT THAT WE CAN ALSO FINISH THE CORRUGATED IRON ROOF IN 2023.

WE WILL CONTINUE TO ASK FOR DONATIONS FROM OUR SUPPORTER CIRCLE, COLLECT MONEY AT FOLK FESTIVALS, EVENTS AND CONCERTS WITH OUR INFORMATION AND DONATION BOOTH AND APPLY FOR DONATIONS FROM BUSINESS AND CIVIL SOCIETY.

A CORPORATE SPONSORSHIP WOULD BE ABSOLUTELY DESIRABLE, WHICH WOULD SUPPORT US WITH THE REMAINING CONSTRUCTION WORK AND ALSO WITH THE EXECUTION OF THE FUNCTIONS OF OUR PLANNED ORPHANAGE AND CHARITY CENTER.

WHEN OUR VISION BEGAN TO REALIZE IN 2020 WITH THE START OF OUR CONSTRUCTION, IT WAS NOT CLEAR HOW WE SHOULD FINANCE THE COSTS. BUT, WE ALWAYS BELIEVED THAT WE COULD DO IT AND TO DATE WE HAVE ALREADY COMPLETED A LARGE PART OF THE BUILDING. WE REMAIN CONFIDENT. WE HAVE OFTEN SET GOALS THAT PEOPLE THOUGHT WE COULDN'T ACHIEVE, AND ULTIMATELY ALL OF OUR PROJECTS HAVE BEEN BLESSED AND SUCCESSFUL.

**IDEAS FOR FINANCING, SUPPORTERS AND INTERESTED PARTIES ARE VERY WELCOME!**



**HOPE-FOR-ETHIOPIA.COM**

HOPE, LOVE AND COMPASSION FOR THE POOR AND NEEDY

Hope



for Ethiopia e.V.



NEW JERUSALEM

# HOPE FOR ETHIOPIA YOUTUBE CHANNEL

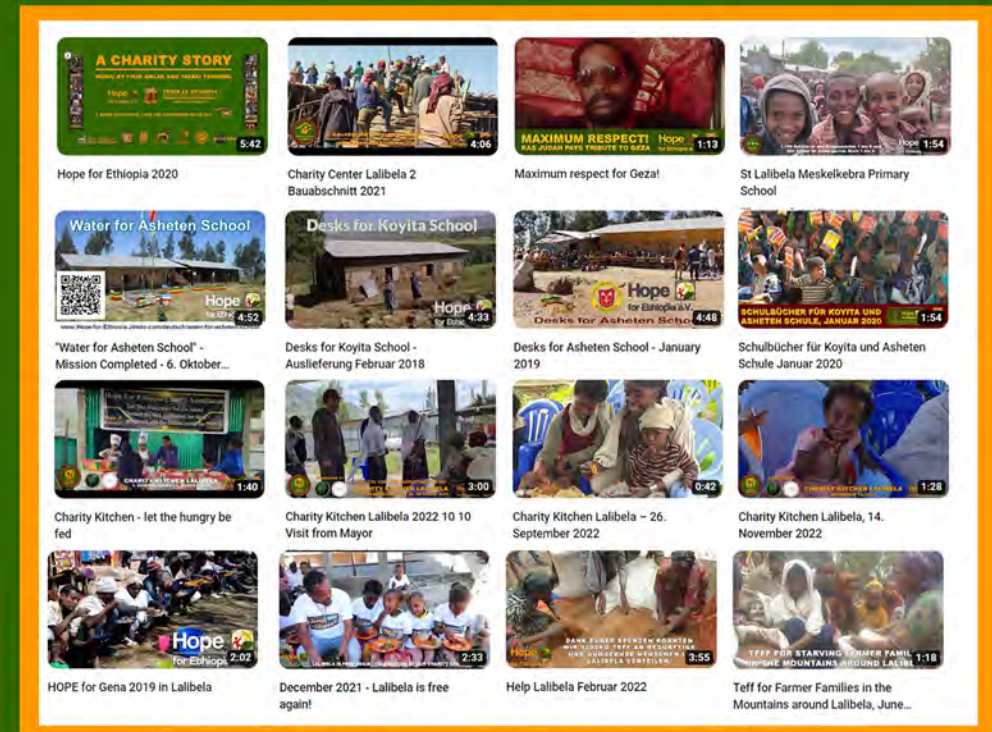
**FINALLY, HERE ARE A FEW INTERESTING VIDEOS ABOUT OUR ASSOCIATION, OUR PROJECTS AND FROM THE CONSTRUCTION SITE OF OUR ORPHANAGE AND CHARITY CENTER.**

**HOPE FOR ETHIOPIA PROMOTIONAL VIDEO  
CONSTRUCTION ORPHANAGE AND CHARITY CENTER  
STATEMENT ABOUT OUR ADMINISTRATIVE HEAD GEZA  
ACTUAL PROJECT MESKELKEBRA KINDERGARTEN**

**WATER FOR ASHETEN SCHOOL 2016  
DESKS FOR KOYITA SCHOOL 2018  
DESKS FOR ASHETEN SCHOOL 2019  
SCHOOL BOOKS FOR BOTH SCHOOLS 2020**

**LAUNCH OF CHARITY KITCHEN AUGUST 2022  
VISIT FROM LALIBELA MAYOR  
FOOD DISTRIBUTION SEPTEMBER 2022  
LET THE HUNGRY BE FED!**

**PILGRIM WELCOME AT CHRISTMAS 2019  
LALIBELA AFTER OCCUPATION 2021  
TEFF FLOUR FOR STARVING PEOPLE 2022  
AND FOR FARMERS FROM THE MOUNTAINS 2022**



**CLICK ON THE VIDEO TO OPEN IT ON YOUTUBE**

**YOUTUBE CHANNEL - [HTTPS://WWW.YOUTUBE.COM/C/HOPEFORETHIOPIA](https://www.youtube.com/c/HOPEFORETHIOPIA)**

**PHOTO CHRONICLES CONSTRUCTION ORPHANAGE & CHARITY CENTER LALIBELA  
1ST CONSTRUCTION PHASE - [HTTPS://PHOTOS.APP.GOO.GL/NFD7ZY6GTMHJDOHF9](https://photos.app.goo.gl/NFD7ZY6GTMHJDOHF9)  
2ND CONSTRUCTION PHASE - [HTTPS://PHOTOS.APP.GOO.GL/1P1MD40QBJH9YN2E8](https://photos.app.goo.gl/1P1MD40QBJH9YN2E8)**



**HOPE-FOR-ETHIOPIA.COM**

**HOPE, LOVE AND COMPASSION FOR THE POOR AND NEEDY**

**Hope**



**for Ethiopia e.V.**



**NEW JERUSALEM**



# HOPE FOR ETHIOPIA CLOSING WORDS

MY LIFE HAS CHANGED, WHEN I MET GEZA KASSA IN 2014 BY COINCIDENCE. HE BECAME OUR ADMINISTRATIVE HEAD IN LALIBELA. FROM THE BEGINNING WE HAVE WORKED TOGETHER ON THE VISION OF A CHARITY CENTER AND ONLY THANKS TO GEZA, ALL OUR PROJECTS WERE POSSIBLE AND SUCCESSFUL. GEZA ALWAYS LIVES WITH COMPASSION AND INCREDIBLE COMMITMENT TO PEOPLE IN NEED. HE IS IRREPLACEABLE IN HIS ORGANIZATIONAL TALENT, SKILLS AND CONNECTIONS.



MY BAPTISM, GETTING TO KNOW GEZA AND THE ESTABLISHMENT OF HOPE FOR ETHIOPIA HAVE GIVEN MY LIFE A NEW DIRECTION. THANKS TO OUR WORK MANY OTHER LIVES HAVE CHANGED FOR THE BETTER. OUR ASSOCIATION GROWS STEADILY AND THE IMPACT IN LALIBELA IS ENORMOUS. HELPING PEOPLE GIVES ME PURPOSE, HAS BECOME MY PASSION AND I HAVE DEDICATED MY LIFE TO OUR PROJECT. IT IS MY DESTINY TO CONTINUE THE WORK AND REALIZE OUR VISIONS. I SEE MYSELF ONLY AS AN EXECUTIVE BODY AND ACTUALLY, IT IS ALL THE SUPPORTERS, SPONSORS AND DONORS WHO MAKE THE GOOD DEEDS OF CHARITY POSSIBLE.

*Ferdinand Reul - founder and chairman*

**WE THANK YOU** FOR YOUR INTEREST AND HOPE THAT WE HAVE CONVINCED YOU THAT OUR ASSOCIATION AND OUR PROJECTS ARE WORTH OF SUPPORT. IF YOU WANT MORE INFORMATION, WE CAN DESCRIBE EACH ITEM IN MUCH MORE DETAIL AND WE WOULD BE GLAD IF YOU WOULD LIKE TO DONATE FOR OUR PROJECTS AND VISIONS.

ON THE NEXT PAGES YOU WILL FIND CERTIFICATES AND OFFICIAL ASSOCIATION DOCUMENTS



**HOPE-FOR-ETHIOPIA.COM**

HOPE, LOVE AND COMPASSION FOR THE POOR AND NEEDY

Hope



for Ethiopia e.V.



NEW JERUSALEM

# የምስክር ወረቀት



## To Hope for Ethiopia

የላዕይበላ ከተማ አስተዳደር ትምህርት ጽ/ቤት በ2011 ዓ.ም የትምህርት ዘመን የመማር ማስተማራ የተቃናና ውጤታማ እንዲሆን ትምህርት ተቋማትን በግብዓት፣ በገንዘብ እና በእውቀት ከፍተኛ ድጋፍ በማድረግ ሳበረከቱልን የላቀ አስተዋጽኦ ይህንን የምስጋና የምስክር ወረቀት ስንሰጠዎት ትብብረዎት ወደፊትም እንደማይሰዩን በማመን ነው።

ሙሉ-ጌታ ወ/ሚካኤል አንዳርጌ  
Mulugeta W/Michael Andargie

የላዕይበላ/አስተዳደር



ማንደፍሮ ታደሰ ገላይ  
Mandefro Tadesse Gelaye

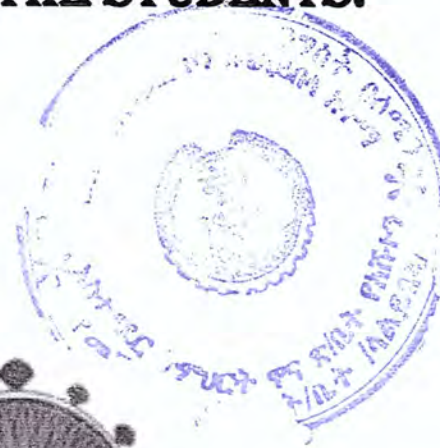
የላዕይበላ/አስተዳደር/ጽ/ቤት ኃላፊ

# LETTER OF APPRECIATION

## TO HOPE FOR ETHIOPIA PROJECT

**THE SCHOOL COMMUNITY AND THE STUDENTS OF ASHETEN PRIMARY SCHOOL ARE GREATFUL TO YOUR PROJECT FOR YOUR HELP TO SOLVE THE WATER PROBLEM IN ASHETEN AREA**

**WE ARE INDEBTED TO YOU FOR YOUR HELP AND WE HOPE YOUR PROJECT WILL WORK WITH THE SCHOOL FUTURLEY. WE HAVE GIVEN THIS LETTER OF APPRECIATION FOR YOUR HELP WITH THE NAME OF THE SCHOOL COMMUNITY AND WITH THE NAME OF THE STUDENTS.**



**Ereda sisay**

**Scholl principal**

**Email:** [Ashetenprimaryschool2016@gmail.com](mailto:Ashetenprimaryschool2016@gmail.com)

# Certificate

## To Hope For Ethiopia

Asheten Primary School is one of the Primary schools in lalibela town administration. The school has faced shortage of chairs for students. You solve the Problems of chairs . So we want to give a thanks letter in the name of the town administration and the students. We hope your cooperation and help will continue in the future.

Thank you again for your help

Lalibala Town Administration Education Office

  
M/r Mandefro Tadesse

የሌባሌ ከተማ አስተዳደር  
ትምህርት ማኅተም ቢሮ

Date 6/6/2010 E.C

# Certificate

## To Hope For Ethiopia

Koyita Primary School is one of the Primary schools in lalibela town administration. The school has faced shortage of chairs for students. You solve the problems of chairs & Black boards. So we want to give a thanks letter in the name of the town administration and the students. We hope your cooperation and help will continue in the future.

Thank you again for your help

Lalibala Town Administration Education Office

M/r Serto Abeje



የትምህርት ጽ/ቤት ሰ/ጠ  
Serto Abeje Mebris  
የሌባሌ ከተማ አስተዳደር  
ትምህርት ጽ/ቤት የደንበኞች



በኢትዮጵያ ኦርቶዶክስ ተዋሕዶ ቤተ ክርስቲያን በሰሜን ወሎ ሀገረ ስብከት የደብረ ሮሃ ቅዱስ ላሊበላ ገዳም ሰበካ ጉባኤ ጽ/ቤት

# የምስጋና የምስክር ወረቀት

ለ ፍቅር ማርያም

በ2012 ዓ.ም በተከበረው የጌታችን የመድኃኒታችን የኢየሱስ ክርስቶስ ፣ የቅዱስ ላሊበላ የልደትና የጥምቀት በዓል አከባቢ ላይ በገንዘብ ፣ በዕውቀትና በጉልበት ላበረከቱት ጉልህ የሆነ አስተዋጽኦ በቤተ ክርስቲያኒቱ ስም እያመሰገን ከታላቅ ምስጋና ጋር ይህን የምስክር ወረቀት ስንሰጠዎት በታላቅ አክብሮት ነው።



« ሰላም እግዚአብሔር ከሁላችን ጋር ይሁን »

መ/ር አባ ጽጌ ሥላሴ መዝገብ  
 ቆሞስ  
 MEMHR ABA TSIGE SILASSIE MEZGEBU  
 KOMOS  
 የደብረ ሮሃ ቅ/ላሊበላ ገዳም አስተዳዳሪ

Date 25 / 09 / 2016

## Thank you certificate

To: Hope for Ethiopia project (Ferdinand Reul)

With a great honor we want to certify you on behalf of those lower class of our society students, as well as to be by the name of Lalibela city administration for your love, respect and co-operation to our society by your multilateral project especially on providing water for those students who don't have water for drink.

So we give you this certificate with full of gratitude for being the right hand our society students, also by promising to cooperate with you in every step your activities.



With high respect

Mr. Chekole Adane

Manager

# Saint Lalibela youth unity association, certification of Application

To HOPE FOR ETHIOPIA

In commemoration of the festival of Ethiopian Christmas & the birth of st. lalibela, our association does organize welcoming receptions at every corner of our holy town by washing the legs of pilgrims up on their arrival and we would like to officially recognize your greater materiel and financial contribution. We present this certificate of Application by hoping that your collaboration with saint lalibela youth unity association will be continual may the blessing of our holy father and st. lalibela may be up on you for the contributions that you are doing for the annual festivity that take place in lalibela.



አብዮት ግለጽ  
Abeyot Malede  
ሰራ አስኪያጅ  
Manager



**Saint Lalibela youth unity association, certification of application**

To HOPE FOR ETHIOPIA

In commemoration of the festival of Ethiopian Christmas & the birth of st.Lalibela, our association does organize welcoming receptions at every corner of our holy town by washing the legs of pilgrims up on their arrival and we would like to officially recognize your greater material and financial contribution. We present this certificate of application by hoping that your collaboration with saint Lalibela youth unity association will be continual may the blessing of our Holy Father and st.Lalibela may be up on you for the contributions that you are doing for the annual festivity that take place in Lalibela.



አብይ ማላድ  
Abevo Malede  
*[Signature]*  
Manager

በአማራ ብሄራዊ ክልላዊ መንግስት በሰሜን ወሎ ዞን  
 AMHARA NATIONAL REGIONAL STATE NORTH WOLLO ZONE

የላሊበላ ከተማ አስተዳደር ሴቶች ህጻናት/ማ/ጉ/ጽ/ቤት  
 LALIBLA TOWN ADMINISTRATION WOMEN CHILDREN SOCIAL AFFAIR OFFICE

# የምስክር ወረቀት

ለ ተሳፋ አክቲቪዲዎች የኮሎኒያል ማህበር

በላሊበላ ከተማ/ቤት ላይ ቀበሌዎች ለሚኖሩ ምንም አይነት አጋዥ ለሌላቸው ለከፋ ችግር ተጋላጭ ለሆኑ አረጋጊዎች ፤ አካል ጉዳተኞች ፤ ህጻናት እና ሴቶች እያደረጋችሁ ላለው የተለያዩ ድጋፎች ከፍተኛ ምስጋና እያቀረብን ለወዲቱም ድጋፋችሁ እንደማይለየን ተስፋ እያደረግን ይህን የምስጋና ምስክር ወረቀት በላሊበላ/ከተማ/አስተዳደር/ህ/ማ/ጉ/ጽ/ቤት ስም ከታላቅ አክብሮት እና ምስጋናጋር ተሰጥቶታል።

የተሰጠበት ቀን 12/03/2015 ዓ.ም

*[Handwritten signature]*  
 የጽ/ቤት ኃላፊ/ዳይሬክቶር



# Certificate

To HOPE for Ethiopia Charities Association

To the people living in S.t lalibela city administration, who have no helpers, to Elderly, the disabled, children and women who are vulnerable to the worst problems, we are deeply grateful for the various support you are doing and we hope that your support will not separate us in the future. So that by name of lalibela city administration women child social affair office are given to you this Certificate with great respect and gratitude.

Date of issue 21-11-2022 e.c

*[Handwritten signature]* Desta Birara

HEAD, BUREAU OF WOMEN CHILDREN SOCIAL AFFAIRS OFFICE

*[Handwritten notes]*  
 የሴቶች ህጻናት ማህበራዊ ጉዳይ ጽ/ቤት

# Amtsgericht Jena

Rathenaustraße 13 Zufahrt über Felsenkellerstraße  
07745 Jena



Amtsgericht Jena, Postfach 10 08 29, 07708 Jena

Jena, den 08.12.2014

Hope for Ethiopia e.V.  
c/. Herr Ferdinand Reul  
Felsenkellerstraße 20  
07745 Jena

Telefon: 03641 - 307-0  
Fax: 03641 - 307-880  
Ansprechpartner/in: Frau Böhm  
Durchwahl: 829

**Registerzeichen: VR 231593** (bitte immer angeben)  
Mitteilung über die Eintragung im Vereinsregister Jena  
**Hope for Ethiopia e.V., Sitz: Jena**  
Ihr Zeichen:

Unter der oben angegebenen Registernummer ist im Vereinsregister Jena Nachfolgendes eingetragen worden:

1.

**Nummer der Eintragung: 1**

2.

**a) Name:**

Hope for Ethiopia e.V.

**b) Sitz, Geschäftsanschrift, Empfangsberechtigte:**

Jena

3.

**a) Allgemeine Vertretungsregelung:**

Jedes Vorstandsmitglied vertritt einzeln.

**b) Vertretungsberechtigte und besondere Vertretungsbefugnis:**

Vorsitzender:

Reul, Ferdinand, Jena, \*26.12.1971

Stellv. Vorsitzende:

Lachmann, Anne, Jena, \*04.01.0982

Kassenwart:

Seidemann, David, St Gangloff, \*23.06.1987

4.

**a) Satzung:**

eingetragener Verein

Die Satzung ist errichtet am 10.11.2014.

Finanzamt Jena • 07740 Jena

Hope for Ethiopia e. V.  
Herr Ferdinand Reul  
Felsenkellerstr. 20  
07745 JenaAuskunft erteilt  
Frau Lindrath  
Geschäftszeichen  
162 / 141 / 18878Zimmernummer  
432  
Telefon (Durchwahl)  
(03641)378-432  
Ihr Zeichen, Ihre Nachricht vom  
Identifikationsnummern

Datum

9.1.15

**Bescheid nach § 60a Abs. 1 AO über die gesonderte Feststellung der Einhaltung der satzungsmäßigen Voraussetzungen nach den §§ 51, 59, 60 und 61 AO****A. Feststellung**

Die Satzung der Körperschaft

Hope for Ethiopia e. V., Felsenkellerstr. 20, 07745 Jena

in der Fassung vom 10.11.2014 (zuletzt geändert am \_\_\_\_\_)

erfüllt die satzungsmäßigen Voraussetzungen nach den §§ 51, 59, 60 und 61 AO.

**B. Hinweise zur Feststellung**

Eine Anerkennung, dass die tatsächliche Geschäftsführung (§ 63 AO) den für die Anerkennung der Steuerbegünstigung notwendigen Erfordernissen entspricht, ist mit dieser Feststellung nicht verbunden.


Diese Feststellung bindet das Finanzamt hinsichtlich der Besteuerung der Körperschaft und der Steuerpflichtigen, die Zuwendungen in Form von Spenden und Mitgliedsbeiträgen an die Körperschaft erbringen (§ 60a Abs. 1 Satz 2 AO). Die Bindungswirkung dieser Feststellung entfällt ab dem Zeitpunkt, in dem die Rechtsvorschriften, auf denen die Feststellung beruht, aufgehoben oder geändert werden (§ 60a Abs. 3 AO). Tritt bei den für die Feststellung erheblichen Verhältnissen eine Änderung ein, ist die Feststellung mit Wirkung vom Zeitpunkt der Änderung der Verhältnisse aufzuheben (§ 60a Abs. 4 AO).

Bitte beachten Sie, dass die Inanspruchnahme der Steuervergünstigungen auch von der tatsächlichen Geschäftsführung abhängt, die der Nachprüfung durch das Finanzamt – ggf. im Rahmen einer Außenprüfung – unterliegt. Die tatsächliche Geschäftsführung muss auf die ausschließliche und unmittelbare Erfüllung der steuerbegünstigten Zwecke gerichtet sein und den Bestimmungen der Satzung entsprechen.

Dies muss durch ordnungsgemäße Aufzeichnungen (insbesondere Aufstellung der Einnahmen und Ausgaben, Tätigkeitsbericht, Vermögensübersicht mit Nachweisen über Bildung und Entwicklung der Rücklagen) nachgewiesen werden (§ 63 AO). Über die Steuervergünstigungen nach den einzelnen Steuergesetzen wird im Rahmen des Veranlagungsverfahrens entschieden.

In jedem Falle ist die Körperschaft insoweit ertragsteuerpflichtig, als sie einen wirtschaftlichen Geschäftsbetrieb unterhält, der kein Zweckbetrieb ist. Soweit Körperschaftsteuerpflicht gegeben ist, besteht im gleichen Umfang Gewerbesteuerpflicht. Durch die Gewährung der Steuerbefreiung von der Körperschaft- und Gewerbesteuer wird die Umsatzsteuerpflicht grundsätzlich nicht berührt.

Bei an das Finanzamt von Arbeitnehmern sind Lohnsteuer, Solidaritätszuschlag und ggf. Kirchensteuer einzubehalten und an das Finanzamt abzuführen.

23-160  
LFD  
(06/2014)Dienstgebäude:  
Dienststunden:  
Servicestelle:  
Kontakte:  
Bankverbindung:Leutragraben 8 • 07743 Jena •  Straßenbahn 5, Haltest. Ernst-Abbe-Platz, Bus Linie 15, Haltest. Löbdergraben bzw. Holzmarkt  
Gleitende Arbeitszeit - Bitte Anrufe möglichst in den Kernzeiten: MO-DO 08.30-12.00 Uhr und 13.30-15.00 Uhr, FR 08.30-12.30 Uhr  
Leutragraben 8 • 07743 Jena • MO-MI 08.00-15.30 Uhr, DO 8.00-18.00 Uhr, FR 08.00-12.00 Uhr☎ Zentrale (0 36 41) 3 78-0 • ☎ Fax (0 36 41) 37 86 53 • ✉ E-Mail: poststelle@finanzamt-jena.thueringen.de  
Landesbank Hessen-Thüringen, BLZ 820 500 00 (BIC: HELADEF320), Kto. 300 1111 578 (IBAN: DE75 820 50 000 300 1111 578),  
wichtig: als Empfänger bitte „Finanzkasse Gera“ eintragen

### C. Rechtsbehelfsbelehrung

Gegen diesen Feststellungsbescheid ist der Einspruch gegeben. Ein Einspruch ist jedoch ausgeschlossen, soweit dieser Bescheid einen Verwaltungsakt ändert oder ersetzt, gegen den ein zulässiger Einspruch oder (nach einem zulässigen Einspruch) eine zulässige Klage, Revision oder Nichtzulassungsbeschwerde anhängig ist. In diesem Fall wird der neue Verwaltungsakt Gegenstand des Rechtsbehelfsverfahrens.

Der Einspruch ist beim **Finanzamt Jena** schriftlich einzureichen, diesem elektronisch zu übermitteln oder dort zur Niederschrift zu erklären.

Die Frist für die Einlegung des Einspruchs beträgt **einen Monat**. Sie beginnt mit Ablauf des Tages, an dem Ihnen dieser Bescheid bekanntgegeben worden ist. Bei Zusendung durch einfachen Brief oder Zustellung mittels Einschreiben durch Übergabe gilt die Bekanntgabe mit dem dritten Tag nach Aufgabe zur Post als bewirkt, es sei denn, dass der Bescheid zu einem späteren Zeitpunkt zugegangen ist. Bei Zustellung mit Zustellungsurkunde oder durch Einschreiben mit Rückschein oder gegen Empfangsbekanntnis ist Tag der Bekanntgabe der Tag der Zustellung.

### D. Hinweise zum Kapitalertragsteuerabzug

Bei Kapitalerträgen, die bis zum 31.12.2017 zufließen, reicht für die Abstandnahme vom Kapitalertragsteuerabzug nach § 44a Abs. 4, 7 und 10 Satz 1 Nr. 3 EStG die Vorlage dieses Feststellungsbescheides oder die Überlassung einer amtlich beglaubigten Kopie dieses Feststellungsbescheides aus. Das Gleiche gilt bis zum o. a. Zeitpunkt für die Erstattung von Kapitalertragsteuer nach § 44b Abs. 6 EStG durch das depotführende Kredit- oder Finanzdienstleistungsinstitut.

Die Vorlage dieses Feststellungsbescheides ist unzulässig, wenn die Erträge in einem wirtschaftlichen Geschäftsbetrieb anfallen, für den die Befreiung von der Körperschaftsteuer ausgeschlossen ist.

### E. Hinweise zur Steuerbegünstigung

#### Die Körperschaft fördert nach ihrer Satzung

mildtätige Zwecke.

folgende gemeinnützige Zwecke:

**Förderung der Entwicklungszusammenarbeit**

(§ 52 Abs. 2 Satz 1 Nr. (n) 15 AO).

### F. Hinweise zur Ausstellung von Zuwendungsbestätigungen

#### Zuwendungsbestätigungen für Spenden

Die Körperschaft ist berechtigt, für Spenden, die ihr zur Verwendung für diese Zwecke zugewendet werden, Zuwendungsbestätigungen nach amtlich vorgeschriebenem Vordruck (§ 50 Abs. 1 EStDV) auszustellen.

Die amtlichen Muster für die Ausstellung steuerlicher Zuwendungsbestätigungen stehen im Internet unter <https://www.formulare-bfinv.de> als ausfüllbare Formulare zur Verfügung.

#### Zuwendungsbestätigungen für Mitgliedsbeiträge

Die Körperschaft ist berechtigt, für Mitgliedsbeiträge Zuwendungsbestätigungen nach amtlich vorgeschriebenem Vordruck (§ 50 Abs. 1 EStDV) auszustellen.

Zuwendungsbestätigungen für Spenden und ggf. Mitgliedsbeiträge i.S. des § 50 Abs. 1 EStDV dürfen nur ausgestellt werden, wenn das Datum dieses Feststellungsbescheides nicht länger als drei Kalenderjahre zurückliegt und bisher kein Freistellungsbescheid oder keine Freistellung mittels Anlage zum Körperschaftsteuerbescheid erteilt wurden. Die Frist ist taggenau zu berechnen (§ 63 Abs. 5 AO).

Steuernummer 162/141/18878  
(Bitte bei Rückfragen angeben)Telefon 03641/378-432  
Telefax 03641 378-653  
Zi.Nr.: 432Finanzamt, 07740 Jena  
3321/B01/001457/08//99098-07.19  
//  
Hope for Ethiopia e. V.  
Herr Ferdinand Reul  
Felsenkellerstr. 20  
07745 Jena**Freistellungsbescheid**für 2016 bis 2018 zur  
**Körperschaftsteuer**  
und Gewerbesteuer**Feststellung****Umfang der Steuerbegünstigung**

Die Körperschaft ist nach § 5 Abs. 1 Nr. 9 KStG von der Körperschaftsteuer und nach § 3 Nr. 6 GewStG von der Gewerbesteuer befreit, weil sie ausschließlich und unmittelbar steuerbegünstigten mildtätigen und gemeinnützigen Zwecken im Sinne der §§ 51 ff. AO dient.

Die Rechtsbehelfsbelehrung bezieht sich nur auf die vorstehende(n) Feststellung(en).

**Hinweise zur Steuerbegünstigung**

Die Körperschaft fördert ausschließlich und unmittelbar mildtätige Zwecke.

Sie fördert außerdem folgende gemeinnützige Zwecke:

- Förderung der Entwicklungszusammenarbeit

Die Satzungszwecke entsprechen § 52 Abs. 2 Satz 1 Nr. 15 AO.

**Hinweise zur Ausstellung von Zuwendungsbestätigungen**

Zuwendungsbestätigungen für Spenden:

Die Körperschaft ist berechtigt, für Spenden, die ihr zur Verwendung für diese Zwecke zugewendet werden, Zuwendungsbestätigungen nach amtlich vorgeschriebenem Vordruck (§ 50 Abs. 1 EStDV) auszustellen.

Die amtlichen Muster für die Ausstellung steuerlicher Zuwendungsbestätigungen stehen im Internet unter <https://www.formulare-bfinv.de> als ausfüllbare Formulare zur Verfügung.

Zuwendungsbestätigungen für Mitgliedsbeiträge:

Die Körperschaft ist berechtigt, für Mitgliedsbeiträge Zuwendungsbestätigungen nach amtlich vorgeschriebenem Vordruck (§ 50 Abs. 1 EStDV) auszustellen.

Zuwendungsbestätigungen für Spenden und ggfs. Mitgliedsbeiträge dürfen nur ausgestellt werden, wenn das Datum des Freistellungsbescheides nicht länger als fünf Jahre zurückliegt. Die Frist ist taggenau zu berechnen (§ 63 Abs. 5 AO).

**Haftung bei unrichtigen Zuwendungsbestätigungen und fehlverwendeten Zuwendungen**

Wer vorsätzlich oder grob fahrlässig eine unrichtige Zuwendungsbestätigung ausstellt oder veranlasst, dass Zuwendungen nicht zu den in der Zuwendungsbestätigung angegebenen steuerbegünstigten Zwecken verwendet werden, haftet für die entgangene Steuer. Dabei wird die entgangene Einkommensteuer oder Körperschaftsteuer mit 30 %, die entgangene Gewerbesteuer pauschal mit 15 % der Zuwendung angesetzt (§ 10b Abs. 4 EStG, § 9 Abs. 3 KStG, § 9 Nr. 5 GewStG).

**Hinweise zum Kapitalertragsteuerabzug**

Bei Kapitalerträgen, die bis zum 31.12.2023 zufließen, reicht für die Abstandnahme vom Kapitalertragsteuerabzug nach § 44a Abs. 4 und 7 Satz 1 Nr. 1 sowie Abs. 4b Satz 1 Nr. 3 und Abs. 10 Satz 1 Nr. 3 EStG die Vorlage dieses Bescheides oder die Überlassung einer amtlich glaubigten Kopie dieses Bescheides aus.

Das Gleiche gilt bis zum o. a. Zeitpunkt für die Erstattung von Kapitalertragsteuer nach § 44b Abs. 6 Satz 1 Nr. 3 EStG durch das depotführende Kredit- oder Finanzdienstleistungsinstitut.

\*\*\*\* Fortsetzung siehe Seite 2 \*\*\*\*

Finanzkasse Gera  
Hermann-Drechsler-Str.1, 07548 Gera  
Zi.Nr.: 2302 Tel.: 0365 639-2352Kreditinstitut:  
Ld Bk Hess-Thür Gz Erfurt  
IBAN DE75 8205 0000 3001 1115 78 BIC HELADEF820Weitere Informationen auf der letzten Seite oder im  
Internet unter [www.thueringen.de/de/finanzaemter](http://www.thueringen.de/de/finanzaemter)

Steuernummer 162/141/18878  
(Bitte bei Rückfragen angeben)

Telefon 0361/573626-432  
Telefax 0361 573626-653

Finanzamt, 07740 Jena  
4068/B02/000049/22//99098-06.22  
//  
Frau  
Simone Reul-Zimmermann  
Wilsdruffer Str. 150  
01705 Freital

## Freistellungsbescheid

für 2019 bis 2021 zur  
Körperschaftsteuer  
und Gewerbesteuer

Für  
Hope for Ethiopia e. V. Herr Ferdinand Reul  
Felsenkellerstr. 20, 07745 Jena

### Feststellung

#### Umfang der Steuerbefreiung

Die Körperschaft ist nach § 5 Abs. 1 Nr. 9 KStG von der Körperschaftsteuer befreit.  
Sie ist nach § 3 Nr. 6 GewStG von der Gewerbesteuer befreit.

#### Hinweise zur Steuerbegünstigung

Die Körperschaft fördert im Sinne der §§ 51 ff. AO ausschließlich und unmittelbar mildtätige und folgende gemeinnützige Zwecke:  
- Förderung der Entwicklungszusammenarbeit (§ 52 Abs. 2 Satz 1 Nr. 15 AO)

#### Hinweis zur Ausstellung von Zuwendungsbestätigungen

Die Körperschaft ist berechtigt, für Spenden, die ihr zur Verwendung für diese Zwecke zugewendet werden, Zuwendungsbestätigungen nach amtlich vorgeschriebenem Vordruck (§ 50 Abs. 1 EStDV) auszustellen. Die amtlichen Muster für die Ausstellung steuerlicher Zuwendungsbestätigungen stehen im Internet unter <https://www.formulare-bfinv.de> als ausfüllbare Formulare zur Verfügung.

Die Körperschaft ist berechtigt, für Mitgliedsbeiträge Zuwendungsbestätigungen nach amtlich vorgeschriebenem Vordruck (§ 50 Abs. 1 EStDV) auszustellen.

Zuwendungsbestätigungen für Spenden und ggf. Mitgliedsbeiträge dürfen nur ausgestellt werden, wenn das Datum dieses Freistellungsbescheides nicht länger als fünf Jahre zurückliegt. Die Frist ist taggenau zu berechnen (§ 63 Abs. 5 AO).

#### Haftung bei unrichtigen Zuwendungsbestätigungen und fehlerverwendeten Zuwendungen

Wer vorsätzlich oder grob fahrlässig eine unrichtige Zuwendungsbestätigung ausstellt oder veranlasst, dass Zuwendungen nicht zu den in der Zuwendungsbestätigung angegebenen steuerbegünstigten Zwecken verwendet werden, haftet für die entgangene Steuer. Dabei wird die entgangene Einkommensteuer oder Körperschaftsteuer mit 30 %, die entgangene Gewerbesteuer pauschal mit 15% der Zuwendung angesetzt (§ 10b Abs. 4 EStG, § 9 Abs. 3 KStG, § 9 Nr. 5 GewStG).

#### Hinweis zum Kapitalertragsteuerabzug

Bei Kapitalerträgen, die bis zum 31.12.2026 zufließen, reicht für die Abstandnahme vom Kapitalertragsteuerabzug nach § 44a Abs. 4 und 7 Satz 1 Nr. 1 sowie Abs. 4b Satz 1 Nr. 3 und Abs. 10 Satz 1 Nr. 3 EStG die Vorlage dieses Bescheides oder die Überlassung einer amtlich beglaubigten Kopie dieses Bescheides aus. Das Gleiche gilt bis zum o. a. Zeitpunkt für die Erstattung von Kapitalertragsteuer nach § 44b Abs. 6 Satz 1 Nr. 3 EStG durch das depotführende Kredit- oder Finanzdienstleistungsinstitut.

Die Vorlage dieses Bescheides ist unzulässig, wenn die Erträge in einem wirtschaftlichen Geschäftsbetrieb anfallen, für den die Befreiung von der Körperschaftsteuer ausgeschlossen ist.

#### Anmerkungen

Bitte beachten Sie, dass die Inanspruchnahme der Steuerbefreiungen auch in Zukunft von der tatsächlichen Geschäftsführung abhängt, die der Nachprüfung durch das Finanzamt - ggf. im Rahmen einer Außenprüfung - unterliegt. Die tatsächliche Geschäftsführung muss auf die ausschließliche und unmittelbare Erfüllung der steuerbegünstigten Zwecke gerichtet sein und die Bestimmungen der Satzung beachten.

Dies muss auch künftig durch ordnungsmäßige Aufzeichnungen (Aufstellung der Einnahmen und Ausgaben, Tätigkeitsbericht, Vermögensübersicht mit Nachweisen über Bildung und Entwicklung der Rücklagen) nachgewiesen werden (§ 63 AO).

\*\*\*\* Fortsetzung siehe Seite 2 \*\*\*\*

Finanzkasse Gera  
Hermann-Drechsler-Str.1, 07548 Gera  
Tel.: 0361/573625-514

Kreditinstitut:  
Ld Bk Hess-Thür Gz Erfurt  
IBAN DE75 8205 0000 3001 1115 78 BIC HELADEF820

Weitere Informationen auf der letzten Seite oder im  
Internet unter [www.finanzamt.thueringen.de](http://www.finanzamt.thueringen.de)

በአማራ ብሔራዊ ክልላዊ መንግስት

አስተዳደርና

ፀጥታ ጉዳዮች ቢሮ

የሰሜን ወሎ ዞን አስተዳደርና ፀጥታ ጉዳዮች መምሪያ

**የምዝገባና ፈቃድ ምስክር ወረቀት**

በአማራ ክልላዊ መንግሥት የበጎ አድራጎት ድርጅቶችና ማህበራት መመዝገቢያና ማስተዳደሪያ አዋጅ ቁጥር 194/2004 ዓ/ም አንቀጽ 63/1 ተስፋ ኢትዮጵያ የበጎ ስድራጎት ማህበር ሆኖ በመምሪያው መመዝገቡንና ፈቃድ ማግኘቱን ለማረጋገጥ ይህ የምስክር ወረቀት ተሰጥቷል።

ይህ ቁጥር 455 የሆነው የምዝገባና ፈቃድ ምስክር ወረቀት የተሰጠበት ጊዜ ግንቦት 29/2011 ዓ/ም ሲሆን የሚፀናበት ጊዜ እስከ ግንቦት 28 ቀን 2014 ዓ/ም ድረስ ብቻ ይሆናል።

ያዕደቀው ትግስት ሞላ

የበአድማ/ም/ክ/ደ/ ኦፊሰር



Amhara National Regional stat Administrative and Security Affairs Bureau

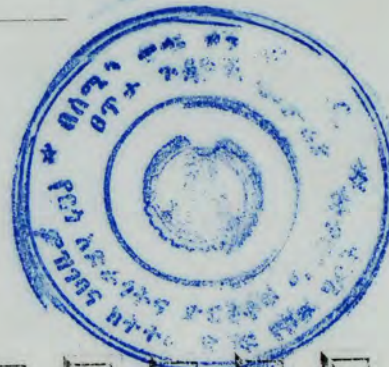
**North Wollo Zone Administrative & Security Affairs Department**

**CERTIFICATE OF REGISTRATION & LICENSE**

This is to certify Hope for Ethioia charity Association has been registered and licensed by the Department as an Ethiopian society in accordance with the Amhara National Regional state charities and societies Registration and Administration proclamation No 194/2012, Article 63/1/ This certificate bearing the Number 455 has been issued on may 22/2019 and shall be valid unti may 21/2022

Approved by Tigst molla

Char. & Soci. Rig Office







በሰሜን ወሎ ዞን አስተዳደር  
 ፀዎታ ጉዳዮች መኖሪያ  
 የሰጉ አድራጎችና ጋርዎች ማህበራት  
 ምዝገባ ክትትል ለ... ሂደት

ቁጥር በአድማ/ 888 /11/ዓም  
 ቀን 29/ 09/ 2011ዓም

**ስተስፋ ኢትዮጵያ ማህበር**  
**ሳሲበሳ ፣**

**ጉዳይ:- መመዘንን ስለማሳወቅ**

ከላይ በርእሱ እንደተገለጸው ማህበር መስርታችሁ ማህበራችሁ ህጋዊ እዉቅና እንዲሰጠዉ መጠየቃችሁ ይታወቃል ስለሆነም የበጎ አድራጎት ማህበራ በአማራ ብሄራዊ ክልላዊ መንግሥት የበጎ አድራጎት ድርጅቶችና ማህበራት መመዘንዎና ማስተዳደሪያ አዋጅ ቁጥር 194/2004 ዓ/ም አንቀጽ 63/1/ መሠረት መስፈርቱን አሟልቶ የበጎ አድራጎት ማህበር ሆኖ የተመዘገበ መሆኑን እየገለጸን ፣

በጎ አድራጎት ማህበራ የተቋቋመበትን ዓላማ መሠረት በማድረግ የአዋጁንና የደንቡን ድንጋጌዎች እንዲሁም በቢሮው የሚወጡ መመሪያዎችን አክብሮ መንቀሳቀስ እንደሚገባውና በየበጅት ዓመታችሁ መጨረሻ የስራ ክንውን ሪፖርት ፣ የሂሳብ መገለጫና የጾዲት ሪፖርት ለመምሪያችን እንድታቀርቡ እናሳስባለን።

.. ከሠላምታ ጋር ..

ትግስት ሞላ  
 የበአድማ/ም/ክ/ደ/ አራሰር





የኢትዮጵያ ግንባርና ልማት ፎንድ ስራ ስራ ስራ ስራ  
የሰራተኛው ግብርና ስራ ስራ ስራ ስራ  
ክንፍ ጽ/ቤት

ቁጥር:- ላሊ/ከተ/አስ/ር 602/2012

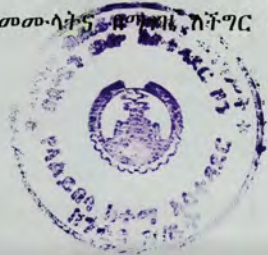
ቀን:- 3/04/2012 ዓ/ም

# ሚመለከተው ሁሉ

## ጉዳዩ:- የድጋፍ ደብዳቤ መስጠትን ይመለከታል

ከላይ በርእሱ ለመግለጽ እንደተሞከረው በላሊበላ ከተማ አስተዳደር ውስጥ ኗሪ የሆነው ማህበረሰብ በተለያዩ የኑሮ ደረጃ የሚኖር ሲሆን በዚህ የማህበረሰብ ክፍል ውስጥ በገብተኛ የኑሮ ደረጃ የሚኖሩና ለከፋ ችግር ተጋላጭ የሆኑ ምንም አይነት የሚረዳቸው፣ አጋዥና እረዳት ለሌላቸው አረጋጊያና አቅ-መደካማዎችን የድሃድሃ የሆኑ ማህበረሰቦችን እናትና አባታቸውን በተለያዩ ምክንያት ያጡ ህጻናትን፣ አካል ጉዳተኛ የሆኑ የህብረተሰብ ክፍሎችን Ferdinand Reul የተባለው ግለሰብ ከ2006 ዓ.ም ጀምሮ በከተማችን ውስጥ በተለያዩ ቀበሌዎች ያሉ ሰቶግር ተጋላጭ የሆኑ የማህበረሰብ ክፍሎችን ከሚመለከተው አካል ጋር በመቀናጀት እና የልዩነት ስራን በመስራት የተለያዩ ድጋፎችን በማድረግ ማለትም:-

- 1ኛ. የምግብና አልባሳት እጥረት ላለባቸው የምግብ እና የአልባሳት ድጋፍ፣
- 2ኛ. ሰቶግረኛ ተማሪዎች :- ደብተር፣ እስክርቤቶ፣ የኒፎርም፣
- 3ኛ. ለት/ቤቶች:- የመጻሕፍት እና ወንበር ድጋፍ፣
- 4ኛ. ለአረጋጊያና ለአካል ጉዳተኞች፣ ለህጻናት እንዲሁም ለኤች አይቪ/ኤድስ ተጋላጭ ለሆኑና የጤና ችግር ላለባቸው የህብረተሰብ ክፍሎች የማሳከም፣ የገንዘብ ድጋፍ የማድረግ፣
- 5ኛ. ዉሃ ለሌላቸው የምንጭ ዉሃ የማጎልበትና የቧንቧ ዉሃ የማስገባት፣
- 6ኛ. ቤት አልባ ለሆኑ አቅ-መ-ደካማ የህብረተሰብ ክፍሎች ቤት በመስራት ድጋፍ በማድረግ በአጠቃላይ ግለሰቡ ከ2006 እስከ 2012 ዓ.ም ድረስ ለተከታታይ 6/ስድስት አመት በከተማችን ውስጥ ባሉ ቀበሌዎች ውስጥ የመንግስትን ክፍተት በመሙላትና በማሳካት ሰቶግር ተጋላጭ



የሆኑ የህብረተሰብ ክፍሎችን በመርዳትና በማገዝ ትልቅ አስተዋጽኦ ያበረከተ ሲሆን አሁንም ግለሰቡ የበለጠ አቅሙን በማጠናከር እና ከመንግስት ጎን በመሆን በርካታ የሰጠው ስራዎችን ለመስራት ያስችለው ዘንድ በአማራ ክልል በሰሜን ወሎ ዞን አስተዳደርና ጸጥታ መመሪያ ተስፋ ለኢትዮጵያ የሰጠ አድራጎት ማህበር በሚል ስያሜ እውቅና በማግኘት ስራውን ተቋማዊና ቀጣይነት ያለው በማድረግ ያሉብንን ችግሮች በዘላቂነት ከመንግስት ጎን በመሆን ለማገዝና ለመቅረፍ እንዲሁም ለአረጋጋዊያንና ለአቅሙ-ደካማዎች የድሃድሃ የሆኑ የማህበረሰብ ክፍሎችን፣ በተለያዩ ምክንያት ወላጆቻቸውን ያጡ ህጻናትን በቋሚነት በአካል በማቀፍ ለመርዳትና ለመደገፍ በተጨማሪም በአረጋጋዊያንና በአቅሙ-ደካሞች ላይ እየተከሰተ ያለውን የአይን ህመም ችግርን ለመፍታት የቅድመ-መከላከል የአይን ህክምና እንዲያገኙ ግንባታዎችን ለመገንባት ከላሊበላ ከተማ አስተዳደር ቦታ በመቀበል ሰፊ ስራዎችን ለመስራት ቅድመ-ዝግጅት እያደረገ ለቀጣይ የከተማዎንና የቀበሌዎችን ማህበረሰብ ችግሮች ለመፍታት ስለሚያስችል ከተማ አስተዳደራችን ግለሰቡ በሚያደርጋቸው የሰጠ አድራጎትና ልዩ ልዩ ድጋፎች ከጎኑ በመሆን አስፈላጊውን ሁሉ ትብብርና እገዛ የምናደርግ መሆኑን እየገለጸን ይህንን የድጋፍ ደብዳቤ የሰጠው ሲሆን ግለሰቡ ቀጣይ ለሚሰራው ስራ የሚመለከተው አካል ሁሉ አስፈላጊውን ትብብርና እገዛ እንዲያደርግለት ስንል በትህትና እንገልጻለን።



«ከሠላምታ ጋር»

ሙሉ ስም፡ ወ/ሚካኤል አንዳርጊ  
Mulugeta W/Michael Andargie  
የላላይበላ ከተማ አስተዳደር  
ከንቲባ

የኢትዮጵያ ፌዴራላዊ ዲሞክራሲያዊ ጠቅላይ ሚኒስትር ጽ/ቤት  
የሥነ ምግባርና ሕይወት ጥናት ሚኒስቴር  
የሥነ ምግባርና ሕይወት ጥናት ሚኒስቴር



**በአማራ ብሔራዊ ክልልዊ መንግስት በሰሜን ወሎ ዞን በላልይበላ ከተማ አስተዳደር የደብረዘይት ቀበሌ አስተዳደር ፅ/ቤት**

ቁጥር/ዘ/ቀ/345-12

ቀን 24/03/12

ለ-----  
-----

**ጉዳዩ የድጋፍ ደብዳቤ ሰለማጠት የመለከታል**

ከላይ በርዕሱ ለመገለፅ እየሞከርነው በላሊበላ ከተማ በደብረ ዘይት ቀበሌ አስተዳደር ውስጥ ናዋሪ የሆነው ማህበረሰብ በድህነት ወለል ያለና ምንም ዓይነት የሚረዳቸው አጋዥና ጠዋሪና ቀባሪ ላላቸው አረጋዊያንና አቅመ ደካመውችን የድሃድሃ የሆኑ ማህበረሰቦችን በከፋ ችግር ተጋላጭና እናትና አባት የሌላቸው ህፃናት አካል ጎዳተኞች የሆኑ ማህበረሰቦችን Ferdinad Reul የተባለው ግለሰብ ከ2006ዓም ጀምሮ ከቀበሌ አመራር ጋር በመሆን በቀበሌው ውስጥ የአሉ የተለዩት ችግሮች የሆኑ ማህበረሰቦች በመለየት የተለያዩ ድጋፎችን በማድረግ ማለትም 1ኛ የምግብና የአልባላት ለላባቸው የምግብና የአልባላት ድጋፍ እዲገኙ በማድረግ 2ኛ ለችግራቸው ተማሪዎች የተለያዩ የትምህርት ቁሳቁሶችን ደብተርና እስክርቤቶችን ሌጎቻቸውን በተጨማሪም ለትምህርት ቤቶች የመገኘትና የወንበር ድጋፎችን በማድረግ 3ኛ አረጋዊያንና ለአካል ጉዳተኞች ለህፃናት እዲሁም በኤች አይቤ ኤድስ ተጋላጭ የሆኑና የጤና ችግር ለላባቸው ማህበረሰቦች እዲታከሙ የገንዘብ ድጋፍ በማድረግ 4ኛ ውሃ ለላላቸው ችግሮች ለሆኑ ማህበረሰቦች ውሃ እዲገኙ ድጋፍ በማድረግ 5ኛ ቤት ላላቸው አቅመደካማውችና ወላጅ አልባ ለሆኑ ህፃናት ከመንግስት ከቀበሌው ጋር በመተባበር ቤት በመስራት የቤት ባቤቶች እዲሆኑ በማድረግ በአጠቃላይ ግለሰቡ ከ2006ዓም ጀምሮ እስከ 2012ዓም ለተከታታይ ለሰድስት ዓመታት በከተማውና በቀበሌያችን ለሚገኙ አረጋዊያን አቅመደካማውች የድሃድሃ ለሆኑ ማህበረሰቦች እናትና አባታቸውን ለአጠቃላይ ህፃናት በኤች አይቤ ኤድስ ተጋላጭ የሆኑ ማህበረሰቦችን ከላይ የጠቀስናቸውን ድጋፎች በማድረግ የማህበረሰቡን ችግሮች በመፍታት ትልቅ አስተዋጾ የበረከተ ሲሆን አሁንም ግለሰቡ የበለጠ አቅመ-ን በማጠናከር ከመንግስትና ከቀበሌው ጎን በመሆን በከተማው የበጎ አድራጎት ስራውን ለመስራት ያስቸለው ዘንድ በአማራ ክልል በሰሜን ወሎ ዞን በአስተዳደርና ፀጥታ መመሪያ ተስፋ ለኤትዮጵያ የበጎ አድራጎት ማህበር በሚል ስያሜ እውቅና በማግኘት ስራውን ተቋማዊና ቀጣይነት ለማድረግ እና የከተማውና የቀበሌያችን ማህበረሰቦች የአሉባቸውን ችግሮች በዘላቂነት ከመንግስት ጎን በመሆን ለመቅረብ እዲሁም አረጋዊያንና አቅመደካማውችን የድሃድሃ የሆኑ ማህበረሰቦችን ወላጅ አልባ ህፃናትን በቋሚነት በመስክል በማቀና ለመርዳትና ለመደገፍ በተጨማሪም በአረጋዊያን በአቅመደካማውች ላይ እየጠከሰተ ያለውን የአይን ህመም ችግሮችን ለመፍታት የቅድመ መከላከል የአይን ህክምና እዲገኙ ግንባታዎችን ለመገንባት ከላሊበላ ከተማ አስተዳደር ቦታ በመቀበል ሰራ ስራውን ለመስራት ቅድመ ገዢነት እያደረገ ለቀጣይ የከተማውንና የቀበሌያችን ማህበረሰብ ችግሮች ለመፍታት ሰለሚያስች ቀበሌ አስተዳደር ግለሰብ በሚያደርጋቸው የበጎ አድራጎትና ልዩልዩ ድጋፎች ከጉኑ በመሆን አስፈላጊውን ሁሉ ትብብርና እገዛ የምናዳርግ መሆኑን እየገለፅን ይህንን የድጋፍ ደብዳቤ የሰጠው ሲሆን ግለሰቡ ቀጣይ ለሚሰራው ስራ የሚመለከተው አካል ሁሉ አስፈላጊውን ትብብርና እጋጣ እድታደርጉለት ስንል በትኩረት እንገልጻለን።

0333060038



ከላሊምታ ጋር  
ድ/ሮ. ዳግው አበበ  
Haile Dagnw Abebe

የደብረዘይት ቀበሌ  
ፍጥነት ጉዳይ



በአማራ ብሔራዊ ኮሌጭ መንግስት  
በሰዓን ግድ አስተዳደር የሥነ  
ጥልቀት ኮሌጭ አስተዳደር የመስቀል  
ጽ/ቤት

ቁጥር መስ/ክ/ቀ/319/2012

ቀን 29/03/2012

ለ \_\_\_\_\_  
\_\_\_\_\_

### ጉዳዩ:- የድጋፍ ደብዳቤ ስለመስጠት ይመለከታል

ከላይ በርዕሱ ለመግለጽ እንደተሞከረው በላሊበላ ከተማ በመስቀል ክብራ ቀበሌ አስተዳደር ውስጥ ነዋሪ የሆነው ማህበረሰብ በድህነት ወለል ያለና ምንም እይነት የሚረዳቸው ኢንፎርሜሽን ስርዓት ጠቅላይ ቀበሌ ለሌላቸው አረጋጋጭዎች አቅመ ደካማዎችን የድሃ ድሃ የሆኑ ማህበረሰቦችን Ferdinand Reul የተባለው ግለሰብ ከ2006 ዓ.ም ጀምሮ ከቀበሌ አመራሩ ጋር በመሆን በቀበሌው ውስጥ ያሉ የተለያዩ ችግሮች የሆኑ ማህበረሰቦች በመለየት የተለያዩ ድጋፎችን በማድረግ ማለትም

1ኛ የምግብና የአልባሳት ችግር ላለባቸው የምግብና የአልባሳት ድጋፍ እንዲገኙ በማድረግ

2ኛ ለችግሮች ተማሪዎች የተለያዩ የትምህርት ቤት ቁሳቁሶችን ደብተርና እስኪሰጡ ኢንፎርሜሽን በተጨማሪም ለትምህርት ቤቶች የመፅሀፍና የወንበር ድጋፎችን በማድረግ

3ኛ ለአረጋጋጭዎች ለአካል ጉዳተኞች ለህፃናት እንዲሁም በኤች አይቪ ኤዲሰ ተጋላጭ የሆኑና የጤና ችግር ላለባቸው ማህበረሰቦች እንዲታከሙ የገንዘብ ድጋፍ በማድረግ

4ኛ ውሃ ለሌላቸው ችግሮች ለሆኑ ማህበረሰቦች ውሃ እንዲያገኙ ድጋፍ በማድረግ

5ኛ ቤት ለሌላቸው አቅመ ደካማዎችና ወላጅ አልባ ለሆኑ ህፃናት ከመንግስት ከቀበሌዎች ጋር በመተባበር ቤት በመስራት የቤት ባለቤት እንዲሆኑ በማድረግ በአጠቃላይ ግለሰቡ ከ2009 ዓ.ም ጀምሮ አስከ 2012 ዓ.ም ለተከታታይ ለሦስት ዓመታት በከተማውና በቀበሌያችን ማህበረሰቦች ያሉባቸውን ችግሮች በዘላቂነት ከመንግስት ጎን በመሆን ለመቅረፍ እንዲሁም ለአረጋጋጭዎች አቅመደካማዎችን የድሃ ድሃ የሆኑ ማህበረሰቦችን ወላጅ አልባ ህፃናትን በቋሚነት በመአከል በማቀፍ ለመርዳትና ለመደገፍ በተጨማሪም በአረጋጋጭዎች በአቅ መደካማዎች ላይ እየተከሰተ ያለውን የአይን ህመም ችግሮችን ለመፍታት የቅድመ መከላከል የአይን ህክምና እንዲያገኙ ግንባታዎችን ለመገንባት ከላይኛው ከተማ አስተዳደሩ ቦታ በመቀበል ሰፊ ስራዎችን ለመስራት ቅድመ ዝግጅት እያደረገ ለቀጣይ የከተማውንና የቀበሌያችን ማህበረሰብ ችግሮች ለመፍታት ስለሚያስችል ቀበሌ አስተዳደሩ ግለሰቡ በሚያደርጋቸው የበጎ አድራጎትና ልዩ ልዩ ድጋፎች ከጉኑ በመሆን አስፈላጊውን ሁሉ ትብብርና እገዛ የምናደርግ መሆኑን እየገለፅን ይህንን የድጋፍ ደብዳቤ የሰጠው ሲሆን ግለሰቡ ቀጣይ ለሚሰራው ስራ የሚመለከተው አካል ሁሉ አስፈላጊውን ትብብርና እገዛ እንድታደርጉት ስንል በትህትና እንገልጻለን ::



ሥልጣን ጋር  
አባ ቀበሌ መኪና  
የመስቀል ኮሌጭ  
ቀበሌ የፍ አስተዳደር



የግዴታ ስርዓት አሰጣጥ ማኅበር  
 በግዴታ ስርዓት አሰጣጥ ማኅበር  
 የግዴታ ስርዓት አሰጣጥ ማኅበር  
 የግዴታ ስርዓት አሰጣጥ ማኅበር

ቁጥር/አ/አ/ትም/ደ/1995/12

ቀን-29/03/2012

ለሚመዘኑት ሆስፒታል

**ጉዳዩ የድጋፍ ደብዳቤዎ ሰለማጠት የመለከታል**

ከላይ በርዕሱ ለመገለፅ እደሞክርነው Ferdinand Reul የተባለው ግለሰብ በላሊበላ ከተማ አስተዳደር ትምህርት ፅ/ቤት ስር በሚገኙ ትምህርት ቤቶች የትምህርት ጥራትን ለማስጠበቅና የትምህርት ቤቱን ችግር በመረዳት የተለያዩ የትምህርት ቁሳቁሶችን ድጋፍ በማድረግ ከፍተኛ አስተዳዳሪ እያደረጉልን ያሉ በመሆናቸው ለቀጣይም ግለሰቡ በከተማችን ውስጥ ያሉትን ትምህርት ቤቶችን ለመደገፍና ለማሰጠት የተለያዩ ስራዎችን ለመስራት እየተቀሳቀሱ በመሆናቸው ስለዚህ ፅ/ቤቱ ግለሱ በሚያደርጋቸው የቦኅ አድራጎችና ድጋፎች ከጉኑ በመሆን አስፈላጊውን ሁሉ ትብብርና እገዛ የምናደርግ መሆኑን እየገለፅን ይህንን የድጋፍ ደብዳቤ የሰጠው ሲሆን ግለሰቡ ቀጣይ ለሚሰራው ስራ የሚመለከተው አካል ሁሉ አስፈላጊውን ትብብርና እጋዛ እድታደርጉለት ስንል በትህትና እንገልጻለን።

ጥራት ያለው ትምህርት ለሁሉም



*[Handwritten Signature]*

የርዳና ማኅበር ማኅበር  
 Yordanus Meshelem

የግዴታ ስርዓት አሰጣጥ ማኅበር  
 ትምህርት ፅ/ቤት  
 ምክትል ጋራ